

# [KD Validated] eIF4E Rabbit pAb

Catalog No.: A2162 **9 Publications**

## Basic Information

**Observed MW**

25kDa/28kDa

**Calculated MW**

25kDa

**Category**

Primary antibody

**Applications**

WB, IHC-P, IF/ICC, IP, ELISA

**Cross-Reactivity**

Human, Mouse, Rat

## Background

The protein encoded by this gene is a component of the eukaryotic translation initiation factor 4F complex, which recognizes the 7-methylguanosine cap structure at the 5' end of messenger RNAs. The encoded protein aids in translation initiation by recruiting ribosomes to the 5'-cap structure. Association of this protein with the 4F complex is the rate-limiting step in translation initiation. This gene acts as a proto-oncogene, and its expression and activation is associated with transformation and tumorigenesis. Several pseudogenes of this gene are found on other chromosomes. Alternative splicing results in multiple transcript variants.

## Recommended Dilutions

**WB** 1:500 - 1:1000**IHC-P** 1:50 - 1:100**IF/ICC** 1:50 - 1:200**IP** 0.5µg-4µg antibody for  
200µg-400µg extracts of  
whole cells**ELISA** Recommended starting  
concentration is 1 µg/mL.  
Please optimize the  
concentration based on  
your specific assay  
requirements.

## Contact

 | 400-999-6126 | [cn.market@abclonal.com.cn](mailto:cn.market@abclonal.com.cn) | [www.abclonal.com.cn](http://www.abclonal.com.cn)

## Immunogen Information

**Gene ID**

1977

**Swiss Prot**

P06730

**Immunogen**

Synthetic peptide. This information is considered to be commercially sensitive.

**Synonyms**

CBP; EIF4F; AUTS19; EIF4E1; eIF-4E; EIF4EL1; 4E

## Product Information

**Source**

Rabbit

**Isotype**

IgG

**Purification**

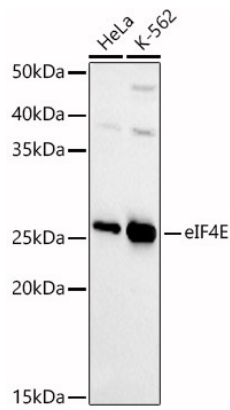
Affinity purification

**Storage**

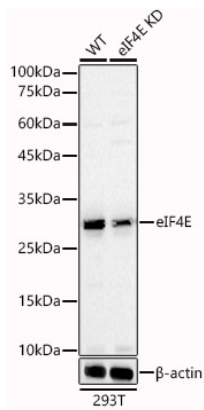
Store at -20°C. Avoid freeze / thaw cycles.

Buffer: PBS containing 50% glycerol, preserved with proclin300 or sodium azide (as specified on the Certificate of Analysis), pH 7.3.

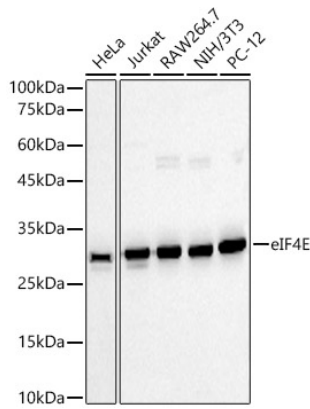
Validation Data



Western blot analysis of various lysates, using [KD Validated] eIF4E Rabbit pAb (A2162) at 1:1000 dilution.  
Secondary antibody: HRP-conjugated Goat anti-Rabbit IgG (H+L) (AS014) at 1:10000 dilution.  
Lysates/proteins: 25µg per lane.  
Blocking buffer: 3% nonfat dry milk in TBST.  
Detection: ECL Basic Kit (RM00020).  
Exposure time: 45s.

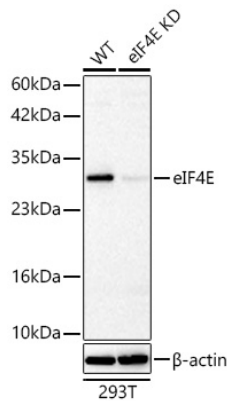


Western blot analysis of lysates from wild type(WT) and eIF4E knockdown (KD) 293T cells, using [KD Validated] eIF4E Rabbit pAb (A2162) at 1:500 dilution.  
Secondary antibody: HRP-conjugated Goat anti-Rabbit IgG (H+L) (AS014) at 1:10000 dilution.  
Lysates/proteins: 25µg per lane.  
Blocking buffer: 3% nonfat dry milk in TBST.  
Detection: ECL Basic Kit (RM00020).  
Exposure time: 30s.

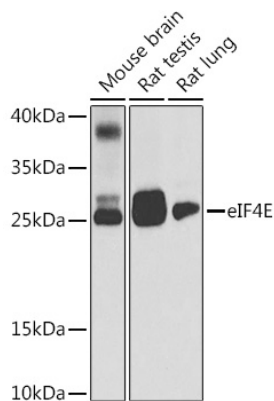


Western blot analysis of various lysates, using [KD Validated] eIF4E Rabbit pAb (A2162) at 1:500 dilution.  
Secondary antibody: HRP-conjugated Goat anti-Rabbit IgG (H+L) (AS014) at 1:10000 dilution.  
Lysates/proteins: 25µg per lane.  
Blocking buffer: 3% nonfat dry milk in TBST.  
Detection: ECL Basic Kit (RM00020).  
Exposure time: 30s.

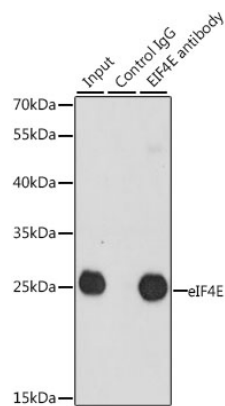
Validation Data



Western blot analysis of lysates from wild type (WT) and eIF4E knockdown (KD) 293T cells using [KD Validated] eIF4E Rabbit pAb (A2162) at 1:1400 dilution incubated overnight at 4°C. Secondary antibody: HRP-conjugated Goat anti-Rabbit IgG (H+L) (AS014) at 1:10000 dilution. Lysates/proteins: 25 µg per lane. Blocking buffer: 3% nonfat dry milk in TBST. Detection: ECL Basic Kit (RM00020) Exposure time: 10 s.

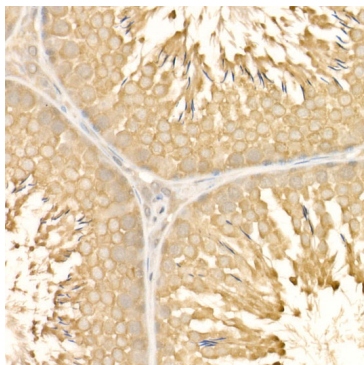


Western blot analysis of various lysates using eIF4E Rabbit pAb (A2162) at 1:1000 dilution. Secondary antibody: HRP-conjugated Goat anti-Rabbit IgG (H+L) (AS014) at 1:10000 dilution. Lysates/proteins: 25µg per lane. Blocking buffer: 3% nonfat dry milk in TBST. Detection: ECL Enhanced Kit (RM00021). Exposure time: 10s.

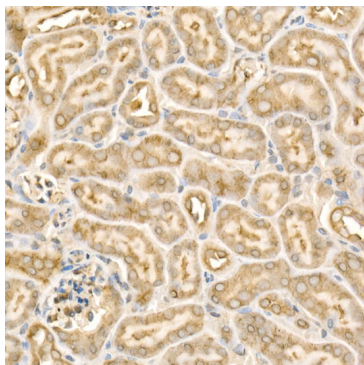


Immunoprecipitation analysis of 200 µg extracts of 293T cells, using 3 µg [KD Validated] eIF4E Rabbit pAb (A2162). Western blot was performed from the immunoprecipitate using [KD Validated] eIF4E Rabbit pAb at a dilution of 1:1000.

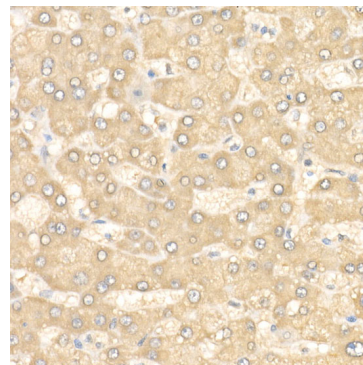
## Validation Data



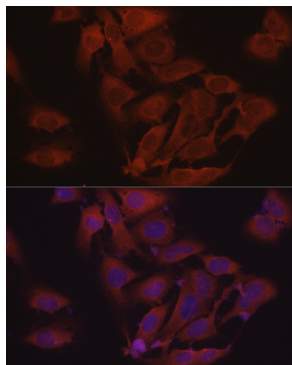
Immunohistochemistry analysis of paraffin-embedded Rat testis using [KD Validated] eIF4E Rabbit pAb (A2162) at dilution of 1:50 (40x lens). High pressure antigen retrieval performed with 0.01M Citrate buffer (pH 6.0) prior to IHC staining.



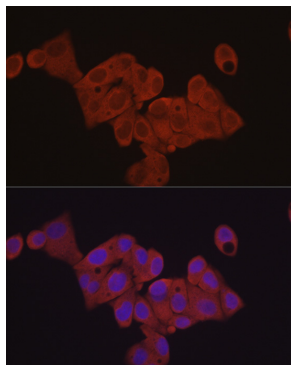
Immunohistochemistry analysis of paraffin-embedded Mouse liver using [KD Validated] eIF4E Rabbit pAb (A2162) at dilution of 1:50 (40x lens). High pressure antigen retrieval performed with 0.01M Citrate buffer (pH 6.0) prior to IHC staining.



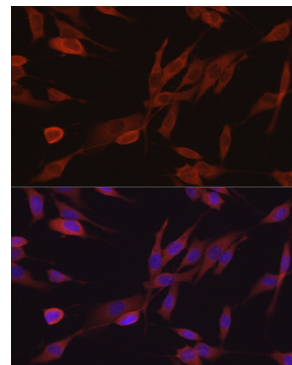
Immunohistochemistry analysis of paraffin-embedded Human liver using [KD Validated] eIF4E Rabbit pAb (A2162) at dilution of 1:50 (40x lens). High pressure antigen retrieval performed with 0.01M Citrate buffer (pH 6.0) prior to IHC staining.



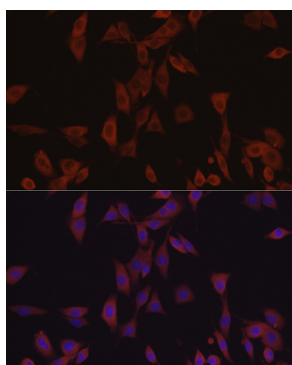
Immunofluorescence analysis of HeLa cells using [KD Validated] eIF4E Rabbit pAb (A2162) at dilution of 1:50 (40x lens). Secondary antibody: Cy3-conjugated Goat anti-Rabbit IgG (H+L) (AS007) at 1:500 dilution. Blue: DAPI for nuclear staining.



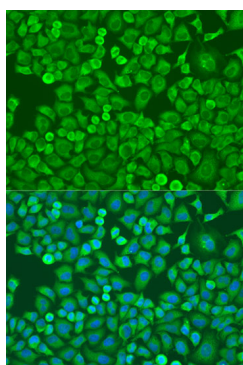
Immunofluorescence analysis of HepG2 cells using [KD Validated] eIF4E Rabbit pAb (A2162) at dilution of 1:50 (40x lens). Secondary antibody: Cy3-conjugated Goat anti-Rabbit IgG (H+L) (AS007) at 1:500 dilution. Blue: DAPI for nuclear staining.



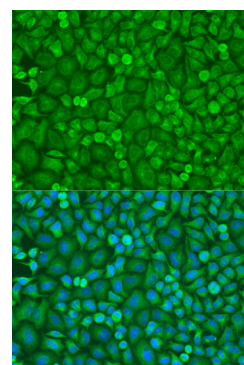
Immunofluorescence analysis of NIH/3T3 cells using [KD Validated] eIF4E Rabbit pAb (A2162) at dilution of 1:50 (40x lens). Secondary antibody: Cy3-conjugated Goat anti-Rabbit IgG (H+L) (AS007) at 1:500 dilution. Blue: DAPI for nuclear staining.



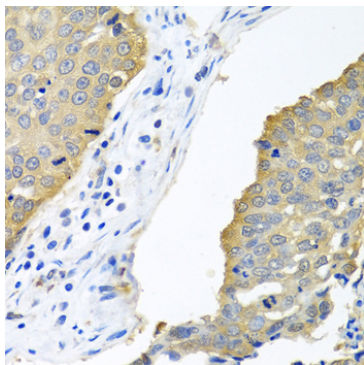
Immunofluorescence analysis of PC-12 cells using [KD Validated] eIF4E Rabbit pAb (A2162) at dilution of 1:50 (40x lens). Secondary antibody: Cy3-conjugated Goat anti-Rabbit IgG (H+L) (AS007) at 1:500 dilution. Blue: DAPI for nuclear staining.



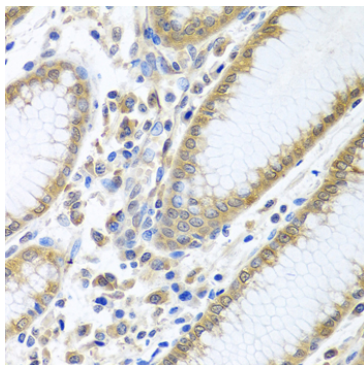
Immunofluorescence analysis of U2OS cells using eIF4E Rabbit pAb (A2162) at dilution of 1:100. Secondary antibody: Cy3-conjugated Goat anti-Rabbit IgG (H+L) (AS007) at 1:500 dilution. Blue: DAPI for nuclear staining.



Immunofluorescence analysis of U2OS cells using [KD Validated] eIF4E Rabbit pAb (A2162) at dilution of 1:100. Secondary antibody: Cy3-conjugated Goat anti-Rabbit IgG (H+L) (AS007) at 1:500 dilution. Blue: DAPI for nuclear staining.



Immunohistochemistry analysis of paraffin-embedded Human lung cancer using [KD Validated] eIF4E Rabbit pAb (A2162) at dilution of 1:100 (40x lens). Microwave antigen retrieval performed with 0.01M PBS Buffer (pH 7.2) prior to IHC staining.



Immunohistochemistry analysis of paraffin-embedded Human stomach using [KD Validated] eIF4E Rabbit pAb (A2162) at dilution of 1:100 (40x lens). Microwave antigen retrieval performed with 0.01M PBS Buffer (pH 7.2) prior to IHC staining.