

HCLS1 Rabbit pAb

Catalog No.: A2165

Basic Information

Observed MW

72kDa

Calculated MW

54kDa

Category

Primary antibody

Applications

ELISA, WB, IHC-P

Cross-Reactivity

Human, Mouse

Background

Enables RNA polymerase II-specific DNA-binding transcription factor binding activity and protein kinase binding activity. Involved in several processes, including positive regulation of intracellular signal transduction; positive regulation of protein phosphorylation; and regulation of transcription, DNA-templated. Located in cytosol; nucleus; and plasma membrane. Part of transcription regulator complex.

Recommended Dilutions

WB 1:500 - 1:2000

IHC-P 1:50 - 1:200

Immunogen Information

Gene ID

3059

Swiss Prot

P14317

Immunogen

Recombinant fusion protein containing a sequence corresponding to amino acids 1-280 of human HCLS1 (NP_005326.2).

Synonyms

HS1; p75; CTTNL; IckBP1; HCLS1

Contact

☎ | 400-999-6126

✉ | cn.market@abclonal.com.cn

🌐 | www.abclonal.com.cn

Product Information

Source

Rabbit

Isotype

IgG

Purification

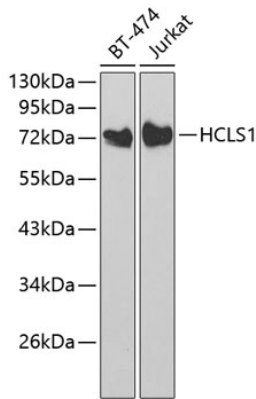
Affinity purification

Storage

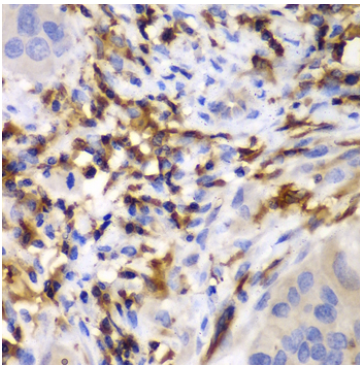
Store at -20°C. Avoid freeze / thaw cycles.

Buffer: PBS with 0.02% sodium azide, 50% glycerol, pH 7.3.

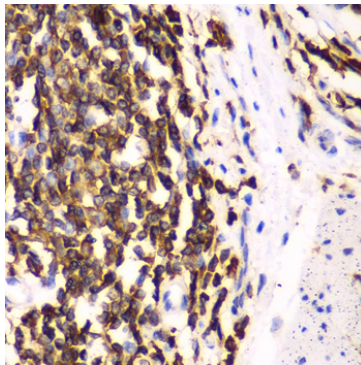
Validation Data



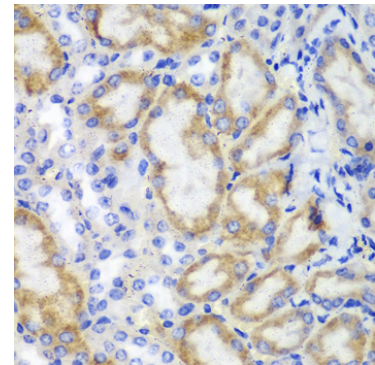
Western blot analysis of various lysates using HCLS1 Rabbit pAb (A2165) at 1:1000 dilution.
Secondary antibody: HRP Goat Anti-Rabbit IgG (H+L) (AS014) at 1:10000 dilution.
Lysates/proteins: 25µg per lane.
Blocking buffer: 3% nonfat dry milk in TBST.



Immunohistochemistry analysis of paraffin-embedded human liver cancer using HCLS1 Rabbit pAb (A2165) at dilution of 1:100 (40x lens). Perform microwave antigen retrieval with 10 mM PBS buffer pH 7.2 before commencing with IHC staining protocol.



Immunohistochemistry analysis of paraffin-embedded human esophagus using HCLS1 Rabbit pAb (A2165) at dilution of 1:100 (40x lens). Perform microwave antigen retrieval with 10 mM PBS buffer pH 7.2 before commencing with IHC staining protocol.



Immunohistochemistry analysis of paraffin-embedded mouse kidney using HCLS1 Rabbit pAb (A2165) at dilution of 1:100 (40x lens). Perform microwave antigen retrieval with 10 mM PBS buffer pH 7.2 before commencing with IHC staining protocol.