

SETD3 Rabbit pAb

Catalog No.: A21681

Basic Information

Observed MW

67kDa

Calculated MW

67kDa

Category

Primary antibody

Applications

ELISA, WB, IP

Cross-Reactivity

Human

Background

Enables protein-L-histidine N-tele-methyltransferase activity. Involved in actin modification and peptidyl-histidine methylation. Located in cytoplasm.

Recommended Dilutions

WB 1:500 - 1:2000

IP 0.5µg-4µg antibody for
200µg-400µg extracts of
whole cells

Immunogen Information

Gene ID

84193

Swiss Prot

Q86TU7

Immunogen

A synthetic peptide corresponding to a sequence within amino acids 72-329 of human SETD3 (NP_115609.2).

Synonyms

hSETD3; C14orf154; SETD3

Contact

 | 400-999-6126

 | cn.market@abclonal.com.cn

 | www.abclonal.com.cn

Product Information

Source

Rabbit

Isotype

IgG

Purification

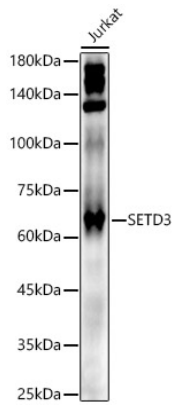
Affinity purification

Storage

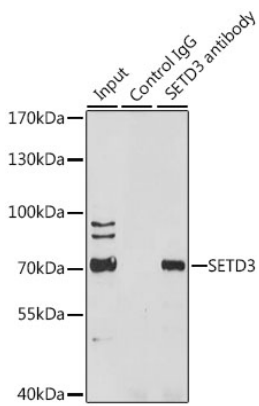
Store at -20°C. Avoid freeze / thaw cycles.

Buffer: PBS with 0.02% sodium azide, 50% glycerol, pH 7.3.

Validation Data



Western blot analysis of lysates from Jurkat cells, using SETD3 Rabbit pAb (A21681) at 1:2000 dilution.
Secondary antibody: HRP Goat Anti-Rabbit IgG (H+L) (AS014) at 1:10000 dilution.
Lysates/proteins: 25µg per lane.
Blocking buffer: 3% nonfat dry milk in TBST.
Detection: ECL Enhanced Kit (RM00021).
Exposure time: 45s.



Immunoprecipitation analysis of 200 µg extracts of HeLa cells, using 3 µg SETD3 antibody (A21681).
Western blot was performed from the immunoprecipitate using SETD3 antibody (A21681) at a dilution of 1:1000.