

AKT1S1/PRAS40 Rabbit pAb

Catalog No.: A21686

Basic Information

Observed MW

40kDa

Calculated MW

27kDa

Category

Primary antibody

Applications

ELISA, WB

Cross-Reactivity

Human

Background

AKT1S1 is a proline-rich substrate of AKT (MIM 164730) that binds 14-3-3 protein (see YWHAH, MIM 113508) when phosphorylated (Kovacina et al., 2003 [PubMed 12524439]).

Recommended Dilutions

WB 1:500 - 1:1000

Immunogen Information

Gene ID

84335

Swiss Prot

Q96B36

Immunogen

A synthetic peptide corresponding to a sequence within amino acids 150-256 of human AKT1S1/PRAS40 (NP_001092103.1).

Synonyms

Lobe; PRAS40; AKT1S1/PRAS40

Contact

☎ | 400-999-6126

✉ | cn.market@abclonal.com.cn

🌐 | www.abclonal.com.cn

Product Information

Source

Rabbit

Isotype

IgG

Purification

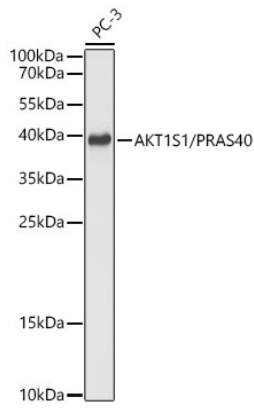
Affinity purification

Storage

Store at -20°C. Avoid freeze / thaw cycles.

Buffer: PBS with 0.01% thimerosal, 50% glycerol, pH7.3.

Validation Data



Western blot analysis of lysates from PC-3 cells using AKT1S1/PRAS40 Rabbit pAb(A21686) at 1:1000 dilution.

Secondary antibody: HRP Goat Anti-Rabbit IgG (H+L) (AS014) at 1:10000 dilution.

Lysates/proteins: 25 µg per lane.

Blocking buffer: 3% nonfat dry milk in TBST.

Detection: ECL Basic Kit (RM00020).

Exposure time: 5s.