

# MUC1 Rabbit pAb

Catalog No.: A21726 **1 Publications**

## Basic Information

### Observed MW

Refer to figures

### Calculated MW

122kDa

### Category

Primary antibody

### Applications

ELISA,WB

### Cross-Reactivity

Human, Mouse, Rat

## Background

This gene encodes a membrane-bound protein that is a member of the mucin family. Mucins are O-glycosylated proteins that play an essential role in forming protective mucous barriers on epithelial surfaces. These proteins also play a role in intracellular signaling. This protein is expressed on the apical surface of epithelial cells that line the mucosal surfaces of many different tissues including lung, breast stomach and pancreas. This protein is proteolytically cleaved into alpha and beta subunits that form a heterodimeric complex. The N-terminal alpha subunit functions in cell-adhesion and the C-terminal beta subunit is involved in cell signaling. Overexpression, aberrant intracellular localization, and changes in glycosylation of this protein have been associated with carcinomas. This gene is known to contain a highly polymorphic variable number tandem repeats (VNTR) domain. Alternate splicing results in multiple transcript variants.

## Recommended Dilutions

WB 1:500 - 1:1000

## Immunogen Information

### Gene ID

4582

### Swiss Prot

P15941

### Immunogen

A synthetic peptide corresponding to a sequence within amino acids 50-150 of human MUC1 (P15941).

### Synonyms

EMA; MCD; PEM; PUM; KL-6; MAM6; MCKD; PEMT; CD227; H23AG; MCKD1; MUC-1; ADMCKD; ADTKD2; Ca15-3; ADMCKD1; CA 15-3; MUC-1/X; MUC1/ZD; MUC-1/SEC; MUC1

## Contact

 | 400-999-6126 | [cn.market@abclonal.com.cn](mailto:cn.market@abclonal.com.cn) | [www.abclonal.com.cn](http://www.abclonal.com.cn)

## Product Information

### Source

Rabbit

### Isotype

IgG

### Purification

Affinity purification

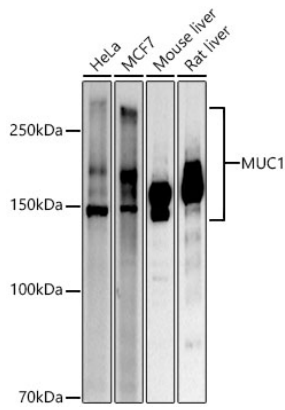
### Storage

Store at -20°C. Avoid freeze / thaw cycles.

Buffer: PBS with 0.05% proclin300,50% glycerol,pH7.3.

## Validation Data

---



Western blot analysis of various lysates, using MUC1 Rabbit pAb (A21726) at 1:1000 dilution.  
Secondary antibody: HRP Goat Anti-Rabbit IgG (H+L) (AS014) at 1:10000 dilution.  
Lysates/proteins: 25µg per lane.  
Blocking buffer: 3% nonfat dry milk in TBST.  
Detection: ECL Basic Kit (RM00020).  
Exposure time: 10s.