

# GLUD1/2 Rabbit mAb

Catalog No.: A21792 **Recombinant**

## Basic Information

### Observed MW

52kDa

### Calculated MW

61kDa

### Category

Primary antibody

### Applications

ELISA, WB, IHC-P, IF/ICC

### Cross-Reactivity

Human, Mouse, Rat

### CloneNo number

ARC53980

## Background

The protein encoded by this gene is localized to the mitochondrion and acts as a homo-hexamer to recycle glutamate during neurotransmission. The encoded enzyme catalyzes the reversible oxidative deamination of glutamate to alpha-ketoglutarate. This gene is intronless.

## Recommended Dilutions

WB	1:10000-1:130000
IHC-P	1:50 - 1:200
IF/ICC	1:50 - 1:200

## Immunogen Information

### Gene ID

2746/ 2747

### Swiss Prot

P00367/P49448

### Immunogen

Recombinant fusion protein containing a sequence corresponding to amino acids 319-558 of human GLUD1/2 (NP\_036216.2).

### Synonyms

GLUD2; GDH2; GLUDP1; GLUD1/2

## Contact

☎ | 400-999-6126

✉ | [cn.market@abclonal.com.cn](mailto:cn.market@abclonal.com.cn)

🌐 | [www.abclonal.com.cn](http://www.abclonal.com.cn)

## Product Information

### Source

Rabbit

### Isotype

IgG

### Purification

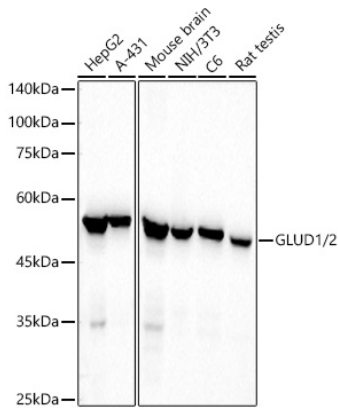
Affinity purification

### Storage

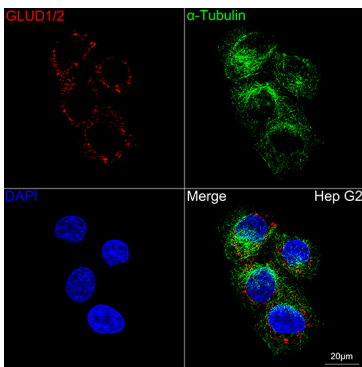
Store at -20°C. Avoid freeze / thaw cycles.

Buffer: PBS with 0.05% proclin300, 0.05% BSA, 50% glycerol, pH7.3.

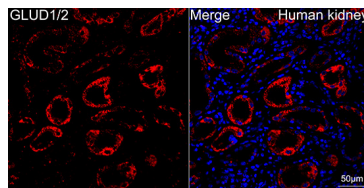
## Validation Data



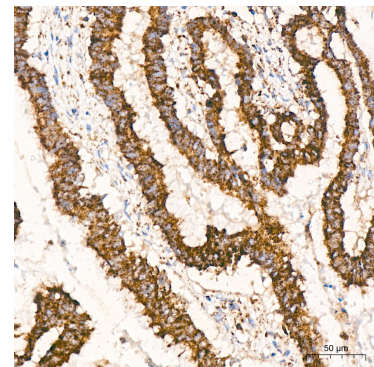
Western blot analysis of various lysates, using GLUD1/2 Rabbit mAb (A21792) at 1:110000 dilution. Secondary antibody: HRP Goat Anti-Rabbit IgG (H+L) (AS014) at 1:10000 dilution. Lysates/proteins: 25µg per lane. Blocking buffer: 3% nonfat dry milk in TBST. Detection: ECL Basic Kit (RM00020). Exposure time: 10s.



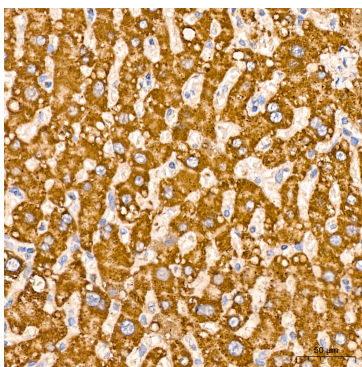
Confocal imaging of Hep G2 cells using GLUD1/2 Rabbit mAb (A21792, dilution 1:200) followed by a further incubation with Cy3 Goat Anti-Rabbit IgG (H+L) (AS007, dilution 1:500) (Red). The cells were counterstained with α-Tubulin Mouse mAb (AC012, dilution 1:400) followed by incubation with ABflo® 488-conjugated Goat Anti-Mouse IgG (H+L) Ab (AS076, dilution 1:500) (Green). DAPI was used for nuclear staining (Blue). Objective: 100x.



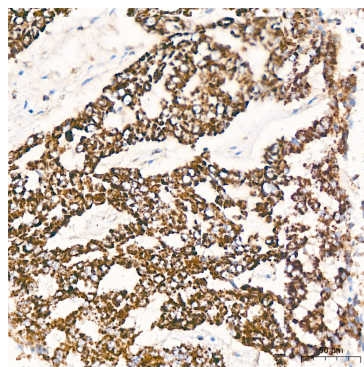
Confocal imaging of paraffin-embedded Human kidney tissue using GLUD1/2 Rabbit mAb (A21792, dilution 1:200) followed by a further incubation with Cy3 Goat Anti-Rabbit IgG (H+L) (AS007, dilution 1:500) (Red). DAPI was used for nuclear staining (Blue). Objective: 40x. Perform high pressure antigen retrieval with 0.01 M citrate buffer (pH 6.0) prior to IF staining.



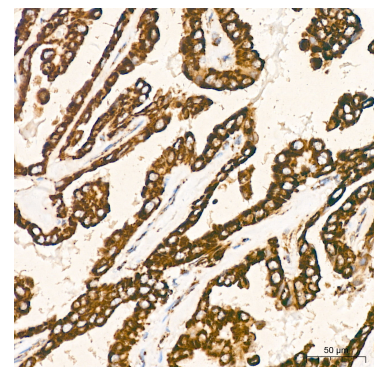
Immunohistochemistry analysis of GLUD1/2 in paraffin-embedded human colon carcinoma tissue using GLUD1/2 Rabbit mAb (A21792) at a dilution of 1:200 (40x lens). High pressure antigen retrieval was performed with 0.01 M citrate buffer (pH 6.0) prior to IHC staining.



Immunohistochemistry analysis of GLUD1/2 in paraffin-embedded human liver tissue using GLUD1/2 Rabbit mAb (A21792) at a dilution of 1:200 (40x lens). High pressure antigen retrieval was performed with 0.01 M citrate buffer (pH 6.0) prior to IHC staining.



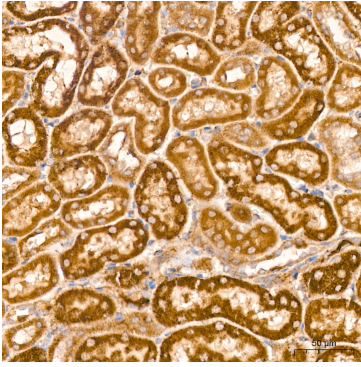
Immunohistochemistry analysis of GLUD1/2 in paraffin-embedded human lung cancer tissue using GLUD1/2 Rabbit mAb (A21792) at a dilution of 1:200 (40x lens). High pressure antigen retrieval was performed with 0.01 M citrate buffer (pH 6.0) prior to IHC staining.



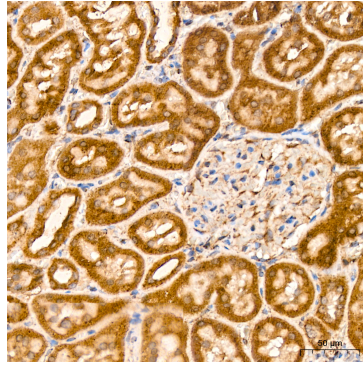
Immunohistochemistry analysis of GLUD1/2 in paraffin-embedded human thyroid cancer tissue using GLUD1/2 Rabbit mAb (A21792) at a dilution of 1:200 (40x lens). High pressure antigen retrieval was performed with 0.01 M citrate buffer (pH 6.0) prior to IHC staining.

## Validation Data

---



Immunohistochemistry analysis of GLUD1/2 in paraffin-embedded mouse kidney tissue using GLUD1/2 Rabbit mAb (A21792) at a dilution of 1:200 (40x lens). High pressure antigen retrieval was performed with 0.01 M citrate buffer (pH 6.0) prior to IHC staining.



Immunohistochemistry analysis of GLUD1/2 in paraffin-embedded rat kidney tissue using GLUD1/2 Rabbit mAb (A21792) at a dilution of 1:200 (40x lens). High pressure antigen retrieval was performed with 0.01 M citrate buffer (pH 6.0) prior to IHC staining.