

NUCB1 Rabbit pAb

Catalog No.: A21817

Basic Information

Observed MW

60kDa

Calculated MW

54kDa

Category

Primary antibody

Applications

ELISA, WB

Cross-Reactivity

Human

Background

This gene encodes a member of a small calcium-binding EF-hand protein family. The encoded protein is thought to have a key role in Golgi calcium homeostasis and Ca(2+)-regulated signal transduction events.

Recommended Dilutions

WB 1:2000 - 1:5000

Immunogen Information

Gene ID

4924

Swiss Prot

Q02818

Immunogen

Recombinant fusion protein containing a sequence corresponding to amino acids 302-461 of human NUCB1 (NP_006175.2).

Synonyms

NUC; CALNUC; NUCB1

Contact

☎ | 400-999-6126

✉ | cn.market@abclonal.com.cn

🌐 | www.abclonal.com.cn

Product Information

Source

Rabbit

Isotype

IgG

Purification

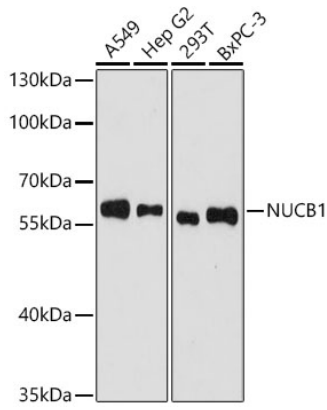
Affinity purification

Storage

Store at -20°C. Avoid freeze / thaw cycles.

Buffer: PBS with 0.01% thimerosal, 50% glycerol, pH7.3.

Validation Data



Western blot analysis of various lysates using NUCB1 Rabbit pAb (A21817) at 1:3000 dilution.
Secondary antibody: HRP Goat Anti-Rabbit IgG (H+L)(AS014) at 1:10000 dilution.
Lysates / proteins: 25 µg per lane.
Blocking buffer: 3 % nonfat dry milk in TBST.
Detection: ECL Basic Kit (RM00020).
Exposure time: 90s.