

GPR68 Rabbit pAb

Catalog No.: A21838

Basic Information

Observed MW

45kDa

Calculated MW

41kDa

Category

Primary antibody

Applications

WB, ELISA

Cross-Reactivity

Human, Mouse

Background

The protein encoded by this gene is a G protein-coupled receptor for sphingosylphosphorylcholine. The encoded protein is a proton-sensing receptor, inactive at pH 7.8 but active at pH 6.8. Mutations in this gene are a cause of amelogenesis imperfecta.

Recommended Dilutions

WB 1:500 - 1:2000

ELISA Recommended starting concentration is 1 µg/mL. Please optimize the concentration based on your specific assay requirements.

Immunogen Information

Gene ID

8111

Swiss Prot

Q15743

Immunogen

Recombinant fusion protein containing a sequence corresponding to amino acids 276-365 of human GPR68 (NP_003476.3).

Synonyms

OGR1; AI2A6; GPR12A; GPR68

Contact

☎ | 400-999-6126

✉ | cn.market@abclonal.com.cn

🌐 | www.abclonal.com.cn

Product Information

Source

Rabbit

Isotype

IgG

Purification

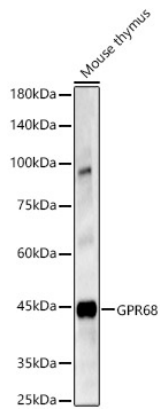
Affinity purification

Storage

Store at -20°C. Avoid freeze / thaw cycles.

Buffer: PBS with 0.02% sodium azide, 50% glycerol, pH 7.3.

Validation Data



Western blot analysis of lysates from Mouse thymus, using GPR68 Rabbit pAb (A21838) at 1:1000 dilution.
Secondary antibody: HRP-conjugated Goat anti-Rabbit IgG (H+L) (AS014) at 1:10000 dilution.
Lysates/proteins: 25µg per lane.
Blocking buffer: 3% nonfat dry milk in TBST.
Detection: ECL Basic Kit (RM00020).
Exposure time: 180s.