

# MST1 Rabbit pAb

Catalog No.: A21842

## Basic Information

### Observed MW

56kDa

### Calculated MW

56kDa

### Category

Primary antibody

### Applications

ELISA, WB, IHC-P, IF/ICC

### Cross-Reactivity

Human, Mouse, Rat

## Background

The protein encoded by this gene is a cytoplasmic kinase that is structurally similar to the yeast Ste20p kinase, which acts upstream of the stress-induced mitogen-activated protein kinase cascade. The encoded protein can phosphorylate myelin basic protein and undergoes autophosphorylation. A caspase-cleaved fragment of the encoded protein has been shown to be capable of phosphorylating histone H2B. The particular phosphorylation catalyzed by this protein has been correlated with apoptosis, and it's possible that this protein induces the chromatin condensation observed in this process.

## Recommended Dilutions

WB	1:500 - 1:1000
IHC-P	1:50 - 1:100
IF/ICC	1:50 - 1:200

## Immunogen Information

### Gene ID

6789

### Swiss Prot

Q13043

### Immunogen

Recombinant fusion protein containing a sequence corresponding to amino acids 303-487 of human MST1 (NP\_006273.1).

### Synonyms

KRS2; MST1; YSK3; STK4

## Contact

☎	400-999-6126
✉	cn.market@abclonal.com.cn
🌐	www.abclonal.com.cn

## Product Information

### Source

Rabbit

### Isotype

IgG

### Purification

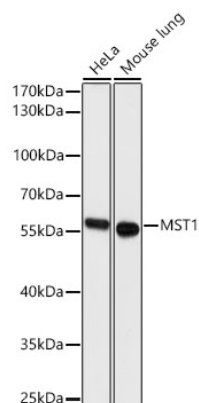
Affinity purification

### Storage

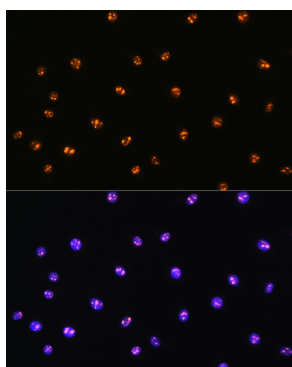
Store at -20°C. Avoid freeze / thaw cycles.

Buffer: PBS with 0.02% sodium azide, 50% glycerol, pH7.3.

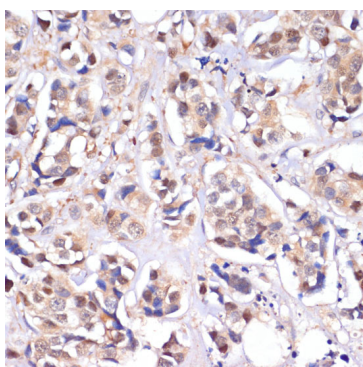
## Validation Data



Western blot analysis of various lysates using MST1 Rabbit pAb (A21842) at 1:1000 dilution.  
Secondary antibody: HRP Goat Anti-Rabbit IgG (H+L) (AS014) at 1:10000 dilution.  
Lysates/proteins: 25µg per lane.  
Blocking buffer: 3% nonfat dry milk in TBST.  
Detection: ECL Basic Kit (RM00020).  
Exposure time: 60s.



Immunofluorescence analysis of L929 cells using MST1 Rabbit pAb (A21842) at dilution of 1:100. Secondary antibody: Cy3 Goat Anti-Rabbit IgG (H+L) (AS007) at 1:500 dilution. Blue: DAPI for nuclear staining.



Immunohistochemistry analysis of MST1 in paraffin-embedded human breast cancer using MST1 Rabbit pAb (A21842) at dilution of 1:100 (40x lens). Perform microwave antigen retrieval with 10 mM PBS buffer pH 7.2 before commencing with IHC staining protocol.