

# PP2A-B55 $\alpha$ /PR55 $\alpha$ /PPP2R2A Rabbit pAb

**Catalog No.: A2185** 2 Publications

## Basic Information

**Observed MW**

52kDa

**Calculated MW**

52kDa

**Category**

Primary antibody

**Applications**

ELISA, WB, IHC-P

**Cross-Reactivity**

Human, Mouse, Rat

## Background

The product of this gene belongs to the phosphatase 2 regulatory subunit B family. Protein phosphatase 2 is one of the four major Ser/Thr phosphatases, and it is implicated in the negative control of cell growth and division. It consists of a common heteromeric core enzyme, which is composed of a catalytic subunit and a constant regulatory subunit, that associates with a variety of regulatory subunits. The B regulatory subunit might modulate substrate selectivity and catalytic activity. This gene encodes an alpha isoform of the regulatory subunit B55 subfamily. Alternatively spliced transcript variants have been described.

## Recommended Dilutions

|              |                |
|--------------|----------------|
| <b>WB</b>    | 1:500 - 1:2000 |
| <b>IHC-P</b> | 1:50 - 1:200   |

## Immunogen Information

**Gene ID**

5520

**Swiss Prot**

P63151

**Immunogen**

Recombinant fusion protein containing a sequence corresponding to amino acids 1-447 of human PP2A-B55 $\alpha$ /PR55 $\alpha$ /PPP2R2A (NP\_002708.1).

**Synonyms**
B55A; PR52A; PR55A; B55ALPHA; PR55alpha; PP2A-B55 $\alpha$ /PR55 $\alpha$ /PPP2R2A

## Contact

 | 400-999-6126

 | [cn.market@abclonal.com.cn](mailto:cn.market@abclonal.com.cn)
 | [www.abclonal.com.cn](http://www.abclonal.com.cn)

## Product Information

**Source**

Rabbit

**Isotype**

IgG

**Purification**

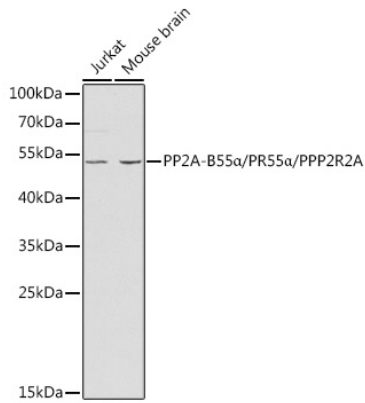
Affinity purification

**Storage**

Store at -20°C. Avoid freeze / thaw cycles.

Buffer: PBS with 0.02% sodium azide, 50% glycerol, pH7.3.

## Validation Data

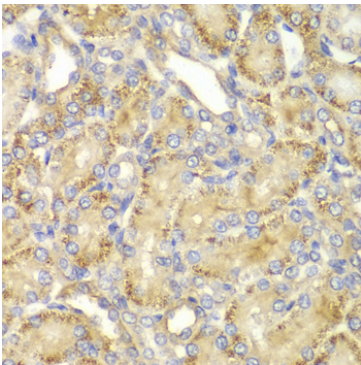


Western blot analysis of various lysates using PP2A-B55α/PR55α/PPP2R2A Rabbit pAb (A2185) at 1:1000 dilution.

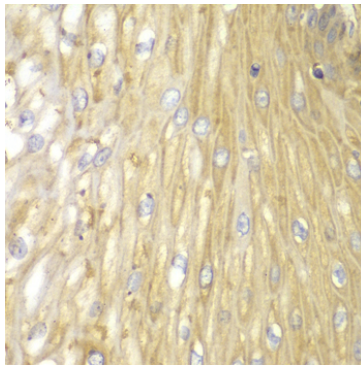
Secondary antibody: HRP Goat Anti-Rabbit IgG (H+L) (AS014) at 1:10000 dilution.

Lysates/proteins: 25µg per lane.

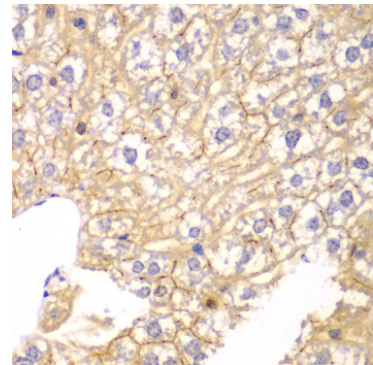
Blocking buffer: 3% nonfat dry milk in TBST.



Immunohistochemistry analysis of paraffin-embedded rat kidney using PP2A-B55α/PR55α/PPP2R2A Rabbit pAb (A2185) at dilution of 1:100 (40x lens). Perform microwave antigen retrieval with 10 mM PBS buffer pH 7.2 before commencing with IHC staining protocol.



Immunohistochemistry analysis of paraffin-embedded human esophagus using PP2A-B55α/PR55α/PPP2R2A Rabbit pAb (A2185) at dilution of 1:100 (40x lens). Perform microwave antigen retrieval with 10 mM PBS buffer pH 7.2 before commencing with IHC staining protocol.



Immunohistochemistry analysis of paraffin-embedded mouse liver using PP2A-B55α/PR55α/PPP2R2A Rabbit pAb (A2185) at dilution of 1:100 (40x lens). Perform microwave antigen retrieval with 10 mM PBS buffer pH 7.2 before commencing with IHC staining protocol.