

[KD Validated] Bcl-2 Rabbit mAb

Catalog No.: A21873 **Recombinant** **4 Publications**

Basic Information

Observed MW

26kDa

Calculated MW

26kDa

Category

Primary antibody

Applications

WB, IHC-P, IP, ELISA

Cross-Reactivity

Human

CloneNo number

ARC2580

Background

This gene encodes an integral outer mitochondrial membrane protein that blocks the apoptotic death of some cells such as lymphocytes. Constitutive expression of BCL2, such as in the case of translocation of BCL2 to Ig heavy chain locus, is thought to be the cause of follicular lymphoma. Alternative splicing results in multiple transcript variants.

Recommended Dilutions

WB 1:1000 - 1:4000

IHC-P 1:200 - 1:800

IP 0.5µg-4µg antibody for
200µg-400µg extracts of
whole cells

ELISA Recommended starting
concentration is 1 µg/mL.
Please optimize the
concentration based on
your specific assay
requirements.

Immunogen Information

Gene ID

596

Swiss Prot

P10415

Immunogen

Synthetic peptide. This information is considered to be commercially sensitive.

Synonyms

Bcl-2; PPP1R50

Contact

☎ | 400-999-6126

✉ | cn.market@abclonal.com.cn

🌐 | www.abclonal.com.cn

Product Information

Source

Rabbit

Isotype

IgG

Purification

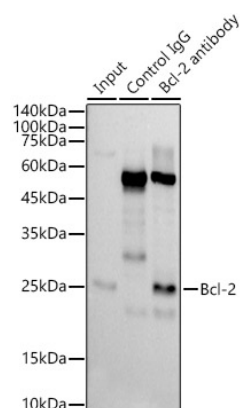
Affinity purification

Storage

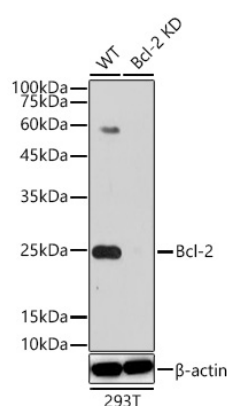
Store at -20°C. Avoid freeze / thaw cycles.

Buffer: PBS containing 50% glycerol and 0.05% BSA, preserved with proclin300 or sodium azide (as specified on the Certificate of Analysis), pH 7.3.

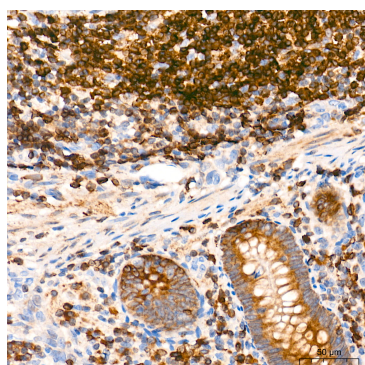
Validation Data



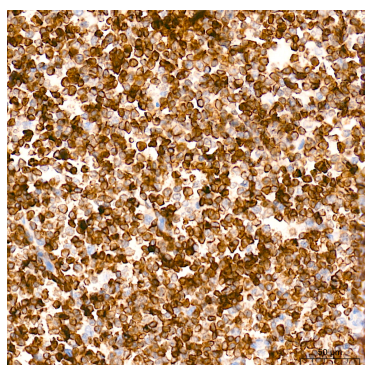
Immunoprecipitation analysis of 300 µg extracts of Jurkat cells using 3 µg [KD Validated] Bcl-2 Rabbit mAb (A21873). Western blot was performed from the immunoprecipitate using [KD Validated] Bcl-2 Rabbit mAb (A21873) at a dilution of 1:1000.



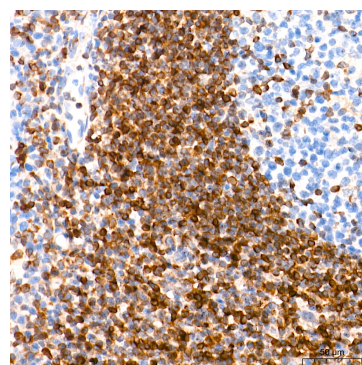
Western blot analysis of lysates from wild type (WT) and Bcl-2 knockdown (KD) 293T cells using [KD Validated] Bcl-2 Rabbit mAb (A21873) at 1:1000 dilution incubated overnight at 4°C. Secondary antibody: HRP-conjugated Goat anti-Rabbit IgG (H+L) (AS014) at 1:10000 dilution. Lysates/proteins: 25 µg per lane. Blocking buffer: 3% nonfat dry milk in TBST. Detection: ECL Basic Kit (RM00020). Exposure time: 30s.



Immunohistochemistry analysis of paraffin-embedded Human appendix tissue using [KD Validated] Bcl-2 Rabbit mAb (A21873) at a dilution of 1:200 (40x lens). High pressure antigen retrieval performed with 0.01M Tris-EDTA Buffer (pH 9.0) prior to IHC staining.



Immunohistochemistry analysis of paraffin-embedded Human follicular lymphoma tissue using [KD Validated] Bcl-2 Rabbit mAb (A21873) at a dilution of 1:200 (40x lens). High pressure antigen retrieval performed with 0.01M Tris-EDTA Buffer (pH 9.0) prior to IHC staining.



Immunohistochemistry analysis of paraffin-embedded Human tonsil tissue using [KD Validated] Bcl-2 Rabbit mAb (A21873) at a dilution of 1:200 (40x lens). High pressure antigen retrieval performed with 0.01M Tris-EDTA Buffer (pH 9.0) prior to IHC staining.