

# NLRP3 Rabbit pAb

Catalog No.: A21906 **4 Publications**

## Basic Information

**Observed MW**

110kDa

**Calculated MW**

118kDa

**Category**

Primary antibody

**Applications**

ELISA, WB, IF/ICC

**Cross-Reactivity**

Human, Mouse, Rat

## Background

Enables DNA-binding transcription factor binding activity and sequence-specific DNA binding activity. Involved in several processes, including positive regulation of T-helper cell differentiation; positive regulation of cytokine production; and response to bacterium. Acts upstream of or within several processes, including NLRP3 inflammasome complex assembly; activation of cysteine-type endopeptidase activity involved in apoptotic process; and defense response to virus. Located in cytoplasm and nucleus. Part of NLRP3 inflammasome complex. Is expressed in central nervous system and retina. Used to study CINCA Syndrome; familial cold autoinflammatory syndrome 1; and non-alcoholic fatty liver disease. Human ortholog(s) of this gene implicated in CINCA Syndrome; Muckle-Wells syndrome; autosomal dominant nonsyndromic deafness 34; familial cold autoinflammatory syndrome 1; and urticaria. Orthologous to human NLRP3 (NLR family pyrin domain containing 3).

## Recommended Dilutions

**WB** 1:1000 - 1:5000**IF/ICC** 1:50 - 1:200

## Immunogen Information

**Gene ID**

216799

**Swiss Prot**

Q8R4B8

**Immunogen**

Recombinant fusion protein containing a sequence corresponding to amino acids 1-93 of mouse NLRP3 (NP\_665826.1).

**Synonyms**

FCU; MWS; FCAS; Cias1; Mmig1; NALP3; Pypaf1; Ail/AVP; AGTAVPRL; NLRP3

## Contact

 | 400-999-6126 | [cn.market@abclonal.com.cn](mailto:cn.market@abclonal.com.cn) | [www.abclonal.com.cn](http://www.abclonal.com.cn)

## Product Information

**Source**

Rabbit

**Isotype**

IgG

**Purification**

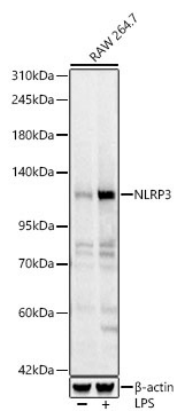
Affinity purification

**Storage**

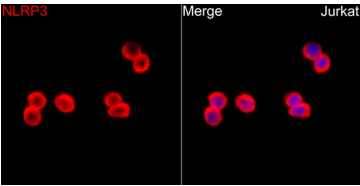
Store at -20°C. Avoid freeze / thaw cycles.

Buffer: PBS with 0.05% proclin300, 50% glycerol, pH7.3.

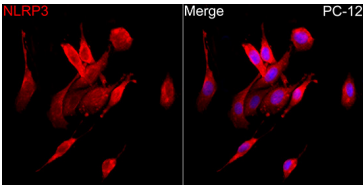
Validation Data



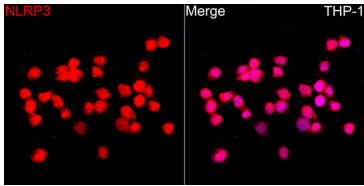
Western blot analysis of lysates from RAW 264.7 cells using NLRP3 Rabbit pAb (A21906) at 1:5000 dilution. Raw 264.7 cells were treated by LPS (1 µg/ml) at 37°C for 8 hours.  
Secondary antibody:HRP Goat Anti-Rabbit IgG (H+L)(AS014) at 1:10000 dilution.  
Lysates/proteins: 25 µg per lane.  
Blocking buffer: 3% nonfat dry milk in TBST.  
Detection:ECL Basic Kit (RM00020).  
Exposure time: 1s.



Immunofluorescence analysis of Jurkat cells using NLRP3 Rabbit pAb(A21906) at a dilution of 1:200 (40x lens). Secondary antibody: Cy3 Goat Anti-Rabbit IgG (H+L)(AS007) at 1:500 dilution. Blue: DAPI for nuclear staining.



Immunofluorescence analysis of PC-12 cells using NLRP3 Rabbit pAb(A21906) at a dilution of 1:200 (40x lens). Secondary antibody: Cy3 Goat Anti-Rabbit IgG (H+L)(AS007) at 1:500 dilution. Blue: DAPI for nuclear staining.



Immunofluorescence analysis of THP-1 cells using NLRP3 Rabbit pAb(A21906) at a dilution of 1:200 (40x lens). Secondary antibody: Cy3 Goat Anti-Rabbit IgG (H+L)(AS007) at 1:500 dilution. Blue: DAPI for nuclear staining.