

Heme Oxygenase 1 (HO-1/HMOX1) Rabbit mAb

Catalog No.: A21911 **Recombinant**

Basic Information

Observed MW

33kDa

Calculated MW

33kDa

Category

Primary antibody

Applications

WB, ELISA

Cross-Reactivity

Human

CloneNo number

ARC53510

Background

Heme oxygenase, an essential enzyme in heme catabolism, cleaves heme to form biliverdin, which is subsequently converted to bilirubin by biliverdin reductase, and carbon monoxide, a putative neurotransmitter. Heme oxygenase activity is induced by its substrate heme and by various nonheme substances. Heme oxygenase occurs as 2 isozymes, an inducible heme oxygenase-1 and a constitutive heme oxygenase-2. HMOX1 and HMOX2 belong to the heme oxygenase family.

Recommended Dilutions

WB 1:2000 - 1:20000

ELISA Recommended starting concentration is 1 µg/mL. Please optimize the concentration based on your specific assay requirements.

Immunogen Information

Gene ID

3162

Swiss Prot

P09601

Immunogen

Recombinant fusion protein containing a sequence corresponding to amino acids 1-265 of human Heme Oxygenase 1 (HO-1/HMOX1) (NP_002124.1).

Synonyms

HO-1; HSP32; HMOX1D; bK286B10; Heme Oxygenase 1 (HO-1/HMOX1)

Contact

☎ | 400-999-6126

✉ | cn.market@abclonal.com.cn

🌐 | www.abclonal.com.cn

Product Information

Source

Rabbit

Isotype

IgG

Purification

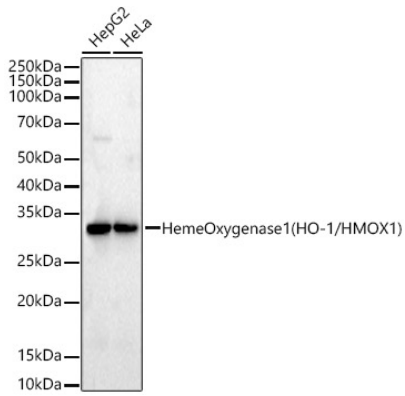
Affinity purification

Storage

Store at -20°C. Avoid freeze / thaw cycles.

Buffer: PBS with 0.05% proclin300, 0.05% BSA, 50% glycerol, pH7.3.

Validation Data



Western blot analysis of various lysates, using Heme Oxygenase 1 (HO-1/HMOX1) Rabbit mAb (A21911) at 1:20000 dilution.

Secondary antibody: HRP-conjugated Goat anti-Rabbit IgG (H+L) (AS014) at 1:10000 dilution.

Lysates/proteins: 25µg per lane.

Blocking buffer: 3% nonfat dry milk in TBST.

Detection: ECL Basic Kit (RM00020).

Exposure time: 90s.