

TFEB Rabbit mAb

Catalog No.: A21928 **Recombinant**

Basic Information

Observed MW

65-70kDa

Calculated MW

53kDa

Category

Primary antibody

Applications

ELISA, WB

Cross-Reactivity

Human

CloneNo number

ARC53777

Background

Enables DNA-binding transcription factor activity; enzyme binding activity; and transcription cis-regulatory region binding activity. Involved in several processes, including cellular response to amino acid starvation; lysosome localization; and positive regulation of autophagy. Located in cytosol; lysosomal membrane; and nucleoplasm.

Recommended Dilutions

WB 1:2000 - 1:9000

Immunogen Information

Gene ID

7942

Swiss Prot

P19484

Immunogen

Recombinant fusion protein containing a sequence corresponding to amino acids 50-173 of human TFEB (NP_009093.1).

Synonyms

TCFEB; BHLHE35; ALPHATFEB; TFEB

Contact

 | 400-999-6126

 | cn.market@abclonal.com.cn

 | www.abclonal.com.cn

Product Information

Source

Rabbit

Isotype

IgG

Purification

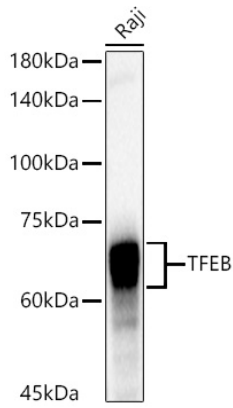
Affinity purification

Storage

Store at -20°C. Avoid freeze / thaw cycles.

Buffer: PBS with 0.05% proclin300, 0.05% BSA, 50% glycerol, pH7.3.

Validation Data



Western blot analysis of lysates from Raji cells, using TFEB Rabbit mAb (A21928) at 1:8000 dilution.
Secondary antibody: HRP Goat Anti-Rabbit IgG (H+L) (AS014) at 1:10000 dilution.
Lysates/proteins: 25µg per lane.
Blocking buffer: 3% nonfat dry milk in TBST.
Detection: ECL Basic Kit (RM00020).
Exposure time: 1s.