

TET3 Rabbit mAb

Catalog No.: A21930 **Recombinant**

Basic Information

Observed MW

230kDa/

Calculated MW

195kDa

Category

Primary antibody

Applications

ELISA, WB

Cross-Reactivity

Mouse

CloneNo number

ARC52663

Background

Enables methylcytosine dioxygenase activity. Involved in DNA demethylation of male pronucleus. Acts upstream of or within DNA demethylation. Located in cytoplasm; female pronucleus; and male pronucleus. Is expressed in several structures, including central nervous system; early conceptus; future brain; and genitourinary system. Orthologous to human TET3 (tet methylcytosine dioxygenase 3).

Recommended Dilutions

WB 1:2000 - 1:20000

Immunogen Information

Gene ID

194388

Swiss Prot

Q8BG87

Immunogen

Recombinant fusion protein containing a sequence corresponding to amino acids 1-285 of mouse TET3 (Q8BG87).

Synonyms

B430006D22Rik; D230004J03Rik; TET3

Contact

☎ | 400-999-6126

✉ | cn.market@abclonal.com.cn

🌐 | www.abclonal.com.cn

Product Information

Source

Rabbit

Isotype

IgG

Purification

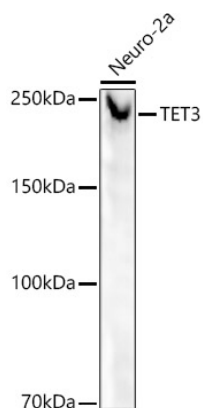
Affinity purification

Storage

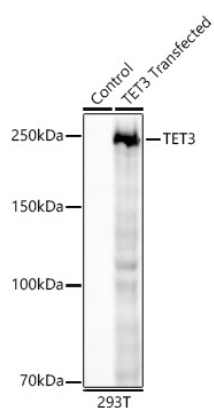
Store at -20°C. Avoid freeze / thaw cycles.

Buffer: PBS with 0.05% proclin300, 0.05% BSA, 50% glycerol, pH7.3.

Validation Data



Western blot analysis of lysates from Neuro-2a cells, using TET3 Rabbit mAb (A21930) at 1:20000 dilution. Secondary antibody: HRP Goat Anti-Rabbit IgG (H+L) (AS014) at 1:10000 dilution. Lysates/proteins: 25µg per lane. Blocking buffer: 3% nonfat dry milk in TBST. Detection: ECL Basic Kit (RM00020). Exposure time: 90s.



Western blot analysis of lysates from wild type (WT) and 293T cells transfected with TET3 using TET3 Rabbit mAb (A21930) at 1:20000 dilution incubated overnight at 4°C. Secondary antibody: HRP-conjugated Goat anti-Rabbit IgG (H+L)(AS014) at 1:10000 dilution. Lysates/proteins: 25 µg per lane. Blocking buffer: 3% nonfat dry milk in TBST. Detection: ECL Basic Kit (RM00020) Exposure time: 30 s.