

HE4/WFDC2 Rabbit mAb

Catalog No.: A21953 **Recombinant**

Basic Information

Observed MW

23kDa

Calculated MW

13kDa

Category

Primary antibody

Applications

ELISA, WB

Cross-Reactivity

Human

CloneNo number

ARC53195

Background

This gene encodes a protein that is a member of the WFDC domain family. The WFDC domain, or WAP Signature motif, contains eight cysteines forming four disulfide bonds at the core of the protein, and functions as a protease inhibitor in many family members. This gene is expressed in pulmonary epithelial cells, and was also found to be expressed in some ovarian cancers. The encoded protein is a small secretory protein, which may be involved in sperm maturation.

Recommended Dilutions

WB 1:500 - 1:1000

Immunogen Information

Gene ID

10406

Swiss Prot

Q14508

Immunogen

Recombinant fusion protein containing a sequence corresponding to amino acids 31-124 of human HE4/WFDC2 (NP_006094.3).

Synonyms

HE4; WAP5; EDDM4; dj461P17.6; HE4/WFDC2

Contact

☎ | 400-999-6126

✉ | cn.market@abclonal.com.cn

🌐 | www.abclonal.com.cn

Product Information

Source

Rabbit

Isotype

IgG

Purification

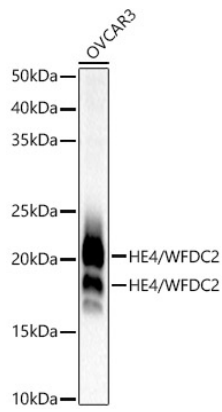
Affinity purification

Storage

Store at -20°C. Avoid freeze / thaw cycles.

Buffer: PBS with 0.05% proclin300, 0.05% BSA, 50% glycerol, pH7.3.

Validation Data



Western blot analysis of OVCAR3, using HE4/WFDC2 antibody (A21953) at 1:1000 dilution.
Secondary antibody: HRP Goat Anti-Rabbit IgG (H+L) (AS014) at 1:10000 dilution.
Lysates/proteins: 25µg per lane.
Blocking buffer: 3% nonfat dry milk in TBST.
Detection: ECL Basic Kit (RM00020).
Exposure time: 180s.