

TIFY10A Rabbit pAb

Catalog No.: A21960

Basic Information

Observed MW

32kDa

Calculated MW

28kDa

Category

Primary antibody

Applications

ELISA, WB

Cross-Reactivity

Arabidopsis thaliana

Background

JAZ1 is a nuclear-localized protein involved in jasmonate signaling. JAZ1 transcript levels rise in response to a jasmonate stimulus. JAZ1 can interact with the COI1 F-box subunit of an SCF E3 ubiquitin ligase in a yeast-two-hybrid assay only in the presence of jasmonate-iso-leucine (JA-ILE) or coronatine. Application of jasmonate methyl ester to Arabidopsis roots reduces the levels of a JAZ1:GUS fusion protein, presumably by stimulating ubiquitin-proteasome-mediated degradation. The Jas domain appears to be important for JAZ1-COI1 interactions in the presence of coronatine. Two positive residues (R205 and R206) in the Jas domain shown to be important for coronatine-dependent COI1 binding are not required for binding AtMYC2.

Recommended Dilutions

WB 1:500 - 1:1000

Immunogen Information

Gene ID

838501

Swiss Prot

Q9LMA8

Immunogen

A synthetic peptide corresponding to a sequence within amino acids 154-253 of arabidopsis thaliana TIFY10A (NP_564075.1).

Synonyms

AtJAZ1; jasmonate-zim-domain protein 1; T29M8.5; T29M8_5; TIFY10A

Contact

☎ | 400-999-6126

✉ | cn.market@abclonal.com.cn

🌐 | www.abclonal.com.cn

Product Information

Source

Rabbit

Isotype

IgG

Purification

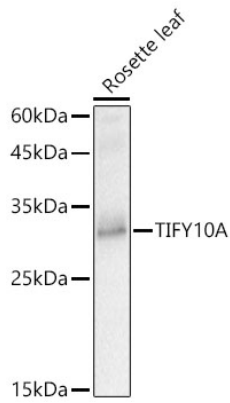
Affinity purification

Storage

Store at -20°C. Avoid freeze / thaw cycles.

Buffer: PBS with 0.05% proclin300, 50% glycerol, pH7.3.

Validation Data



Western blot analysis of lysates from Rosette leaf, using TIFY10A Rabbit pAb (A21960) at 1:1000 dilution.
Secondary antibody: HRP Goat Anti-Rabbit IgG (H+L) (AS014) at 1:10000 dilution.
Lysates/proteins: 25µg per lane.
Blocking buffer: 3% nonfat dry milk in TBST.
Detection: ECL Basic Kit (RM00020).
Exposure time: 1s.