

# DREB1B Rabbit pAb

Catalog No.: A21961

## Basic Information

### Observed MW

25kDa

### Calculated MW

24kDa

### Category

Primary antibody

### Applications

WB, ELISA

### Cross-Reactivity

Arabidopsis thaliana

## Background

Transcriptional activator that binds to the DRE/CRT regulatory element and induces COR (cold-regulated) gene expression increasing plant freezing tolerance. It encodes a member of the DREB subfamily A-1 of ERF/AP2 transcription factor family (CBF1). The protein contains one AP2 domain. There are six members in this subfamily, including CBF1, CBF2, and CBF3. This gene is involved in response to low temperature and abscisic acid.

## Recommended Dilutions

**WB** 1:500 - 1:1000

**ELISA** Recommended starting concentration is 1 µg/mL. Please optimize the concentration based on your specific assay requirements.

## Immunogen Information

### Gene ID

828653

### Swiss Prot

P93835

### Immunogen

Synthetic peptide. This information is considered to be commercially sensitive.

### Synonyms

ATCBF1; C-repeat/DRE binding factor 1; DRE BINDING PROTEIN 1B; DREB1B; T30C3.11; TRANSCRIPTIONAL ACTIVATOR CBF1

## Contact

☎ | 400-999-6126

✉ | [cn.market@abclonal.com.cn](mailto:cn.market@abclonal.com.cn)

🌐 | [www.abclonal.com.cn](http://www.abclonal.com.cn)

## Product Information

### Source

Rabbit

### Isotype

IgG

### Purification

Affinity purification

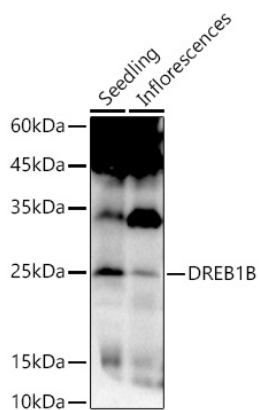
### Storage

Store at -20°C. Avoid freeze / thaw cycles.

Buffer: PBS containing 50% glycerol, preserved with proclin300 or sodium azide (as specified on the Certificate of Analysis), pH 7.3.

## Validation Data

---



Western blot analysis of extracts of various tissues from *Arabidopsis thaliana*, using DREB1B Rabbit pAb (A21961) at 1:1000 dilution.

Secondary antibody: HRP-conjugated Goat anti-Rabbit IgG (H+L) (AS014) at 1:10000 dilution.

Lysates/proteins: 25µg per lane.

Blocking buffer: 3% nonfat dry milk in TBST.

Detection: ECL Basic Kit (RM00020).

Exposure time: 30s.