

FATP4/SLC27A4 Rabbit mAb

Catalog No.: A21969 **Recombinant**

Basic Information

Observed MW

65kDa/70kDa

Calculated MW

72kDa

Category

Primary antibody

Applications

ELISA, WB

Cross-Reactivity

Human, Mouse

CloneNo number

ARC53579

Background

This gene encodes a member of a family of fatty acid transport proteins, which are involved in translocation of long-chain fatty acids across the plasma membrane. This protein is expressed at high levels on the apical side of mature enterocytes in the small intestine, and appears to be the principal fatty acid transporter in enterocytes. Clinical studies suggest this gene as a candidate gene for the insulin resistance syndrome. Mutations in this gene have been associated with ichthyosis prematurity syndrome.

Recommended Dilutions

WB 1:1000 - 1:5000

Immunogen Information

Gene ID

10999

Swiss Prot

Q6P1M0

Immunogen

Recombinant fusion protein containing a sequence corresponding to amino acids 43-237 of human FATP4/SLC27A4 (NP_005085.2).

Synonyms

IPS; FATP4; ACSVL4; FATP4/SLC27A4

Contact

 | 400-999-6126

 | cn.market@abclonal.com.cn

 | www.abclonal.com.cn

Product Information

Source

Rabbit

Isotype

IgG

Purification

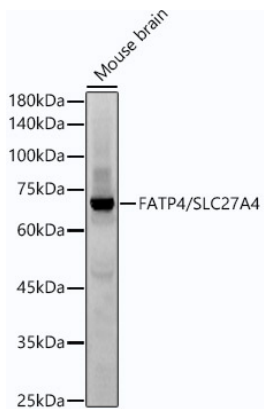
Affinity purification

Storage

Store at -20°C. Avoid freeze / thaw cycles.

Buffer: PBS with 0.05% proclin300, 0.05% BSA, 50% glycerol, pH7.3.

Validation Data



Western blot analysis of extracts of Mouse brain, using FATP4/SLC27A4 antibody (A21969) at 1:2000 dilution.

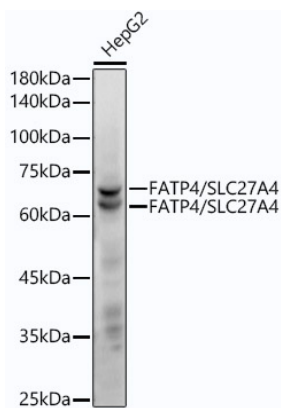
Secondary antibody: HRP Goat Anti-Rabbit IgG (H+L) (AS014) at 1:10000 dilution.

Lysates/proteins: 25µg per lane.

Blocking buffer: 3% nonfat dry milk in TBST.

Detection: ECL Basic Kit (RM00020).

Exposure time: 60s.



Western blot analysis of extracts of HepG2 cells, using FATP4/SLC27A4 antibody (A21969) at 1:2000 dilution.

Secondary antibody: HRP Goat Anti-Rabbit IgG (H+L) (AS014) at 1:10000 dilution.

Lysates/proteins: 25µg per lane.

Blocking buffer: 3% nonfat dry milk in TBST.

Detection: ECL Enhanced Kit (RM00021).

Exposure time: 60s.