

Alpha2-adaptin/AP2A2 Rabbit mAb

Catalog No.: A21978 **Recombinant**

Basic Information

Observed MW

104kDa

Calculated MW

104kDa

Category

Primary antibody

Applications

ELISA, WB

Cross-Reactivity

Human, Mouse

CloneNo number

ARC54447

Background

The protein encoded by this gene is a subunit of the AP-2 adaptor protein complex, which is involved in linking lipid and protein membrane components with the clathrin lattice. This interaction supports the formation of clathrin-coated vesicles, and the encoded subunit aids in the process by binding polyphosphoinositide-containing lipids in the cell membrane.

Recommended Dilutions

WB 1:2000 - 1:20000

Immunogen Information

Gene ID

161

Swiss Prot

O94973

Immunogen

Recombinant fusion protein containing a sequence corresponding to amino acids 590-939 of human Alpha2-adaptin/AP2A2 (NP_036437.1).

Synonyms

HIP9; HYPJ; ADTAB; HIP-9; CLAPA2; Alpha2-adaptin/AP2A2

Contact

☎ | 400-999-6126

✉ | cn.market@abclonal.com.cn

🌐 | www.abclonal.com.cn

Product Information

Source

Rabbit

Isotype

IgG

Purification

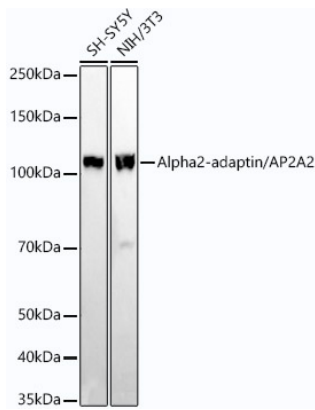
Affinity purification

Storage

Store at -20°C. Avoid freeze / thaw cycles.

Buffer: PBS with 0.05% proclin300, 0.05% BSA, 50% glycerol, pH7.3.

Validation Data



Western blot analysis of extracts of various cell lines, using Alpha2-adaptin/AP2A2 antibody (A21978) at 1:20000 dilution.

Secondary antibody: HRP Goat Anti-Rabbit IgG (H+L) (AS014) at 1:10000 dilution.

Lysates/proteins: 25µg per lane.

Blocking buffer: 3% nonfat dry milk in TBST.

Detection: ECL Basic Kit (RM00020).

Exposure time: 180s.