

POLR2A (N-terminal) Rabbit mAb

Catalog No.: A21980 **Recombinant**

Basic Information

Observed MW

250kDa

Calculated MW

217kDa

Category

Primary antibody

Applications

WB,IP,ELISA,ChIP

Cross-Reactivity

Human, Mouse, Rat

CloneNo number

ARC54153

Background

This gene encodes the largest subunit of RNA polymerase II, the polymerase responsible for synthesizing messenger RNA in eukaryotes. The product of this gene contains a carboxy terminal domain composed of heptapeptide repeats that are essential for polymerase activity. These repeats contain serine and threonine residues that are phosphorylated in actively transcribing RNA polymerase. In addition, this subunit, in combination with several other polymerase subunits, forms the DNA binding domain of the polymerase, a groove in which the DNA template is transcribed into RNA.

Recommended Dilutions

WB 1:2000 - 1:12000

IP 0.5µg-4µg antibody for
400µg-600µg extracts of
whole cells


ELISA Recommended starting
concentration is 1 µg/mL.
Please optimize the
concentration based on
your specific assay
requirements.

ChIP 5µg antibody for
10µg-15µg of Chromatin

Contact

 | 400-999-6126

 | cn.market@abclonal.com.cn

 | www.abclonal.com.cn

Immunogen Information

Gene ID

5430

Swiss Prot

P24928

Immunogen

A synthetic peptide corresponding to a sequence within amino acids 550-650 of human POLR2A POLR2A (N-terminal) (NP_000928.1).

Synonyms

RPB1; RPO2; POLR2; POLRA; RPBh1; RPOL2; NEDHIB; RpIILS; hsRPB1; hRPB220; POLR2A (N-terminal)

Product Information

Source

Rabbit

Isotype

IgG

Purification

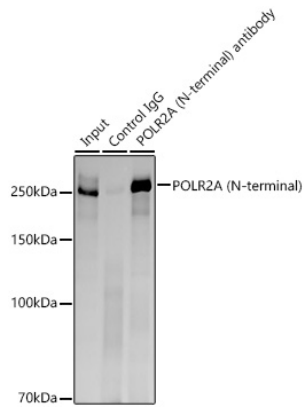
Affinity purification

Storage

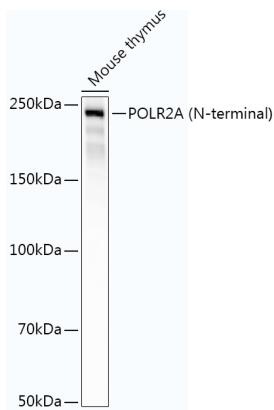
Store at -20°C. Avoid freeze / thaw cycles.

Buffer: PBS with 0.05% proclin300,0.05% BSA,50% glycerol,pH7.3.

Validation Data



Immunoprecipitation analysis of 600 µg extracts of 293F cells using 3 µg POLR2A(N-terminal) antibody (A21980). Western blot was performed from the immunoprecipitate using POLR2A(N-terminal) antibody (A21980) at a dilution of 1:1000.



Western blot analysis of lysates from Mouse thymus, using POLR2A (N-terminal) Rabbit mAb (A21980) at 1:2000 dilution.

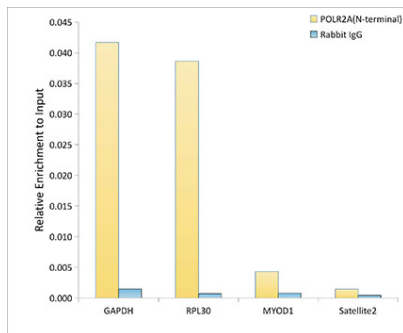
Secondary antibody: HRP-conjugated Goat anti-Rabbit IgG (H+L) (AS014) at 1:10000 dilution.

Lysates/proteins: 25µg per lane.

Blocking buffer: 3% nonfat dry milk in TBST.

Detection: ECL Basic Kit (RM00020).

Exposure time: 10s.



Chromatin immunoprecipitation analysis of extracts of 293F cells, using POLR2A NTD antibody (A21980) and rabbit IgG. The amount of immunoprecipitated DNA was checked by quantitative PCR. Histogram was constructed by the ratios of the immunoprecipitated DNA to the input.