

SOCS3 Rabbit mAb

Catalog No.: A21981 **Recombinant**

Basic Information

Observed MW

28kDa

Calculated MW

25kDa

Category

Primary antibody

Applications

ELISA, WB

Cross-Reactivity

Human, Mouse

CloneNo number

ARC53312

Background

This gene encodes a member of the STAT-induced STAT inhibitor (SSI), also known as suppressor of cytokine signaling (SOCS), family. SSI family members are cytokine-inducible negative regulators of cytokine signaling. The expression of this gene is induced by various cytokines, including IL6, IL10, and interferon (IFN)-gamma. The protein encoded by this gene can bind to JAK2 kinase, and inhibit the activity of JAK2 kinase. Studies of the mouse counterpart of this gene suggested the roles of this gene in the negative regulation of fetal liver hematopoiesis, and placental development.

Recommended Dilutions

WB 1:1000 - 1:5000

Immunogen Information

Gene ID

9021

Swiss Prot

O14543

Immunogen

A synthetic peptide corresponding to a sequence within amino acids 126-225 of human SOCS3 (NP_003946.3).

Synonyms

CIS3; SSI3; ATOD4; Cish3; SSI-3; SOCS-3; SOCS3

Contact

 | 400-999-6126

 | cn.market@abclonal.com.cn

 | www.abclonal.com.cn

Product Information

Source

Rabbit

Isotype

IgG

Purification

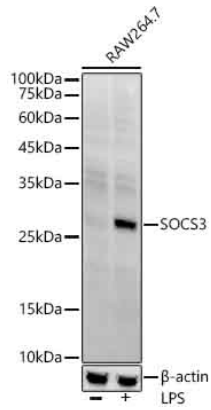
Affinity purification

Storage

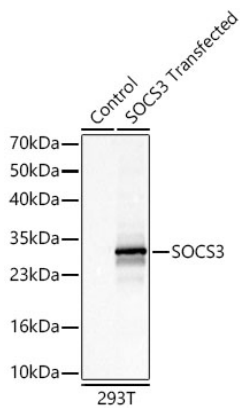
Store at -20°C. Avoid freeze / thaw cycles.

Buffer: PBS with 0.05% proclin300, 0.05% BSA, 50% glycerol, pH7.3.

Validation Data



Western blot analysis of various lysates using SOCS3 Rabbit mAb (A21981) at 1:2000 dilution. Raw264.7 cells were treated by LPS (1 $\mu\text{g}/\text{ml}$) at 37°C for 8 hours.
Secondary antibody: HRP Goat Anti-Rabbit IgG (H+L) (AS014) at 1:10000 dilution.
Lysates/proteins: 25 μg per lane.
Blocking buffer: 3% nonfat dry milk in TBST.
Detection: ECL Enhanced Kit (RM00021).
Exposure time: 180s.



Western blot analysis of lysates from wild type (WT) and 293T cells transfected with SOCS3 using SOCS3 Rabbit mAb (A21981) at 1:1000 dilution.
Secondary antibody: HRP Goat Anti-Rabbit IgG (H+L) (AS014) at 1:10000 dilution.
Lysates/proteins: 25 μg per lane.
Blocking buffer: 3% nonfat dry milk in TBST.
Detection: ECL Basic Kit (RM00020).
Exposure time: 1s.