

Epac1/RAPGEF3 Rabbit pAb

Catalog No.: A2199

Basic Information

Observed MW

104kDa

Calculated MW

104kDa

Category

Primary antibody

Applications

ELISA, WB

Cross-Reactivity

Human, Mouse

Background

Enables guanyl-nucleotide exchange factor activity and protein domain specific binding activity. Involved in several processes, including positive regulation of protein modification process; regulation of actin cytoskeleton organization; and regulation of syncytium formation by plasma membrane fusion. Located in filopodium; lamellipodium; and microvillus. Colocalizes with cortical actin cytoskeleton and plasma membrane. Biomarker of congestive heart failure.

Recommended Dilutions

WB 1:500 - 1:2000

Immunogen Information

Gene ID

10411

Swiss Prot

O95398

Immunogen

Recombinant fusion protein containing a sequence corresponding to amino acids 1-200 of human Epac1/Epac1/RAPGEF3 (NP_001092002.1).

Synonyms

EPAC; EPAC1; bcm910; HSU79275; CAMP-GEFI; Epac1/RAPGEF3

Contact

☎ | 400-999-6126

✉ | cn.market@abclonal.com.cn

🌐 | www.abclonal.com.cn

Product Information

Source

Rabbit

Isotype

IgG

Purification

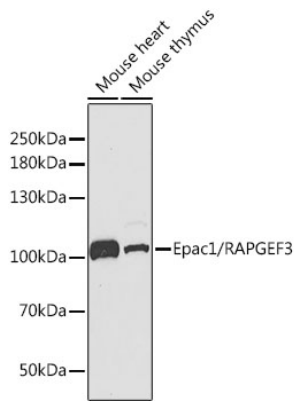
Affinity purification

Storage

Store at -20°C. Avoid freeze / thaw cycles.

Buffer: PBS with 0.02% sodium azide, 50% glycerol, pH7.3.

Validation Data



Western blot analysis of various lysates using Epac1/RAPGEF3 Rabbit pAb (A2199) at 1:1000 dilution.
Secondary antibody: HRP Goat Anti-Rabbit IgG (H+L) (AS014) at 1:10000 dilution.
Lysates/proteins: 25µg per lane.
Blocking buffer: 3% nonfat dry milk in TBST.