

# FUNDC1 Rabbit pAb

Catalog No.: A22001

## Basic Information

### Observed MW

17kDa

### Calculated MW

17kDa

### Category

Primary antibody

### Applications

ELISA, WB

### Cross-Reactivity

Human

## Background

This gene encodes a protein with a FUN14 superfamily domain. The function of the encoded protein is not known.

## Recommended Dilutions

WB 1:500 - 1:1000

## Immunogen Information

### Gene ID

139341

### Swiss Prot

Q8IVP5

### Immunogen

A synthetic peptide corresponding to a sequence within amino acids 50-155 of human FUNDC1 (NP\_776155.1).

### Synonyms

FUNDC1

## Contact

 | 400-999-6126

 | [cn.market@abclonal.com.cn](mailto:cn.market@abclonal.com.cn)

 | [www.abclonal.com.cn](http://www.abclonal.com.cn)

## Product Information

### Source

Rabbit

### Isotype

IgG

### Purification

Affinity purification

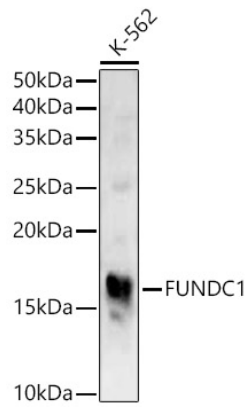
### Storage

Store at -20°C. Avoid freeze / thaw cycles.

Buffer: PBS with 0.05% proclin300, 50% glycerol, pH7.3.

## Validation Data

---



Western blot analysis of extracts of K-562 cells, using FUNDC1 antibody (A22001) at 1:1000 dilution.  
Secondary antibody: HRP Goat Anti-Rabbit IgG (H+L) (AS014) at 1:10000 dilution.  
Lysates/proteins: 25µg per lane.  
Blocking buffer: 3% nonfat dry milk in TBST.  
Detection: ECL Basic Kit (RM00020).  
Exposure time: 30s.