

WTAP Rabbit pAb

Catalog No.: A22004

Basic Information

Observed MW

55kDa

Calculated MW

44kDa

Category

Primary antibody

Applications

ELISA,WB,IF/ICC

Cross-Reactivity

Human, Mouse, Rat

Background

The Wilms tumor suppressor gene WT1 appears to play a role in both transcriptional and posttranscriptional regulation of certain cellular genes. This gene encodes a WT1-associating protein, which is a ubiquitously expressed nuclear protein. Like WT1 protein, this protein is localized throughout the nucleoplasm as well as in speckles and partially colocalizes with splicing factors. Alternative splicing of this gene results in several transcript variants encoding three different isoforms.

Recommended Dilutions

WB	1:100 - 1:500
IF/ICC	1:50 - 1:200

Immunogen Information

Gene ID

9589

Swiss Prot

Q15007

Immunogen

Recombinant fusion protein containing a sequence corresponding to amino acids 212-355 of human WTAP (NP_004897.2).

Synonyms

Mum2; WTAP

Contact

 | 400-999-6126

 | cn.market@abclonal.com.cn

 | www.abclonal.com.cn

Product Information

Source

Rabbit

Isotype

IgG

Purification

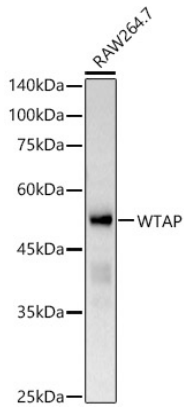
Affinity purification

Storage

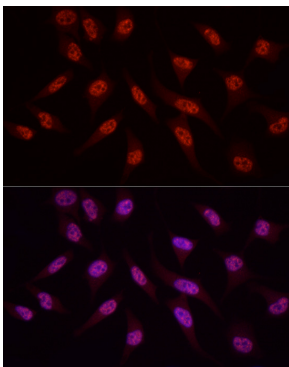
Store at -20°C. Avoid freeze / thaw cycles.

Buffer: PBS with 0.05% proclin300,50% glycerol,pH7.3.

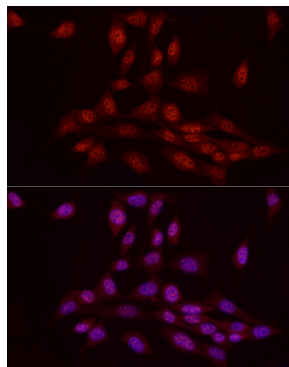
Validation Data



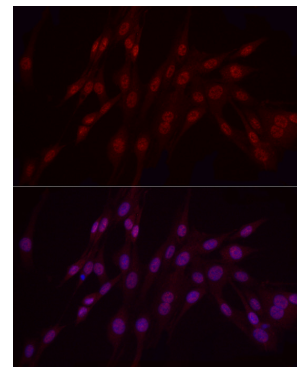
Western blot analysis of extracts of RAW264.7 cells, using WTAP antibody (A22004) at 1:400 dilution.
Secondary antibody: HRP Goat Anti-Rabbit IgG (H+L) (AS014) at 1:10000 dilution.
Lysates/proteins: 25µg per lane.
Blocking buffer: 3% nonfat dry milk in TBST.
Detection: ECL Basic Kit (RM00020).
Exposure time: 60s.



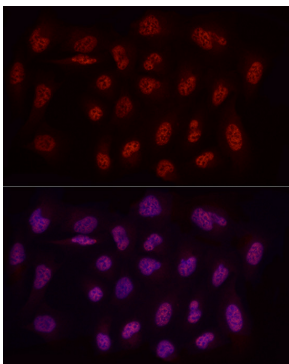
Immunofluorescence analysis of HeLa cells using WTAP Rabbit pAb (A22004) at dilution of 1:50 (40x lens). Blue: DAPI for nuclear staining.



Immunofluorescence analysis of NIH/3T3 cells using WTAP Rabbit pAb (A22004) at dilution of 1:50 (40x lens). Blue: DAPI for nuclear staining.



Immunofluorescence analysis of PC-12 cells using WTAP Rabbit pAb (A22004) at dilution of 1:50 (40x lens). Blue: DAPI for nuclear staining.



Immunofluorescence analysis of U2OS cells using WTAP Rabbit pAb (A22004) at dilution of 1:50 (40x lens). Blue: DAPI for nuclear staining.