

# [KD Validated] SFRP2 Rabbit pAb

Catalog No.: A22017

## Basic Information

### Observed MW

33kDa

### Calculated MW

33kDa

### Category

Primary antibody

### Applications

ELISA, WB, IF/ICC

### Cross-Reactivity

Human, Mouse, Rat

## Background

This gene encodes a member of the SFRP family that contains a cysteine-rich domain homologous to the putative Wnt-binding site of Frizzled proteins. SFRPs act as soluble modulators of Wnt signaling. Methylation of this gene is a potential marker for the presence of colorectal cancer.

## Recommended Dilutions

WB 1:500 - 1:1000

IF/ICC 1:50 - 1:200

## Immunogen Information

### Gene ID

6423

### Swiss Prot

Q96HF1

### Immunogen

A synthetic peptide corresponding to a sequence within amino acids 1-100 of human SFRP2 (NP\_003004.1).

### Synonyms

FRP-2; SARP1; SDF-5; [KD Validated] SFRP2

## Contact

☎ | 400-999-6126

✉ | [cn.market@abclonal.com.cn](mailto:cn.market@abclonal.com.cn)

🌐 | [www.abclonal.com.cn](http://www.abclonal.com.cn)

## Product Information

### Source

Rabbit

### Isotype

IgG

### Purification

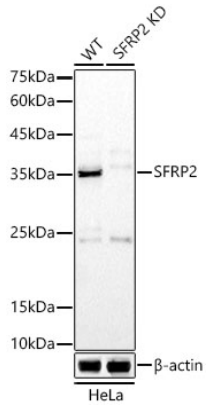
Affinity purification

### Storage

Store at -20°C. Avoid freeze / thaw cycles.

Buffer: PBS with 0.05% proclin300, 50% glycerol, pH7.3.

## Validation Data



Western blot analysis of extracts from wild type (WT) and SFRP2 knockdown (KD) HeLa cells, using SFRP2 antibody (A22017) at 1:1000 dilution.

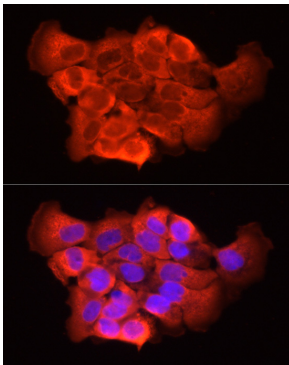
Secondary antibody: HRP Goat Anti-Rabbit IgG (H+L) (AS014) at 1:10000 dilution.

Lysates/proteins: 25  $\mu$ g per lane.

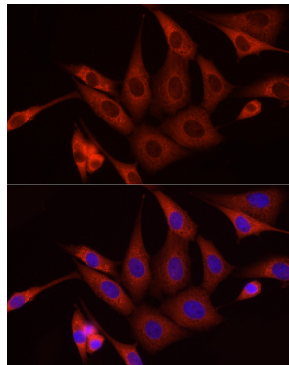
Blocking buffer: 3% nonfat dry milk in TBST.

Detection: ECL Basic Kit (RM00020).

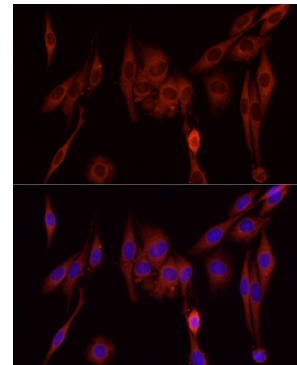
Exposure time: 90s.



Immunofluorescence analysis of A431 cells using [KD Validated] SFRP2 Rabbit pAb (A22017) at dilution of 1:50 (40x lens). Blue: DAPI for nuclear staining.



Immunofluorescence analysis of NIH/3T3 cells using [KD Validated] SFRP2 Rabbit pAb (A22017) at dilution of 1:50 (40x lens). Blue: DAPI for nuclear staining.



Immunofluorescence analysis of PC-12 cells using [KD Validated] SFRP2 Rabbit pAb (A22017) at dilution of 1:50 (40x lens). Blue: DAPI for nuclear staining.