

SQSTM1 Rabbit pAb

Catalog No.: A22025

Basic Information

Observed MW

62kDa

Calculated MW

48kDa

Category

Primary antibody

Applications

ELISA, WB

Cross-Reactivity

Human, Mouse, Rat

Background

Enables K63-linked polyubiquitin modification-dependent protein binding activity; identical protein binding activity; and ionotropic glutamate receptor binding activity. Involved in several processes, including brown fat cell proliferation; energy homeostasis; and positive regulation of long-term synaptic potentiation. Acts upstream of or within negative regulation of transcription by RNA polymerase II. Located in several cellular components, including aggresome; autolysosome; and sperm midpiece. Is expressed in several structures, including alimentary system; central nervous system; genitourinary system; limb; and sensory organ. Used to study Paget's disease of bone. Human ortholog(s) of this gene implicated in GNE myopathy; Paget's disease of bone; and frontotemporal dementia and/or amyotrophic lateral sclerosis-3. Orthologous to human SQSTM1 (sequestosome 1).

Recommended Dilutions

WB 1:500 - 1:2000

Immunogen Information

Gene ID

18412

Swiss Prot

Q64337

Immunogen

A synthetic peptide corresponding to a sequence within amino acids 250-350 of mouse SQSTM1 (NP_035148.1).

Synonyms

Osi; p62; A170; STAP; OSF-6; STONE14; SQSTM1

Contact

☎ | 400-999-6126

✉ | cn.market@abclonal.com.cn

🌐 | www.abclonal.com.cn

Product Information

Source

Rabbit

Isotype

IgG

Purification

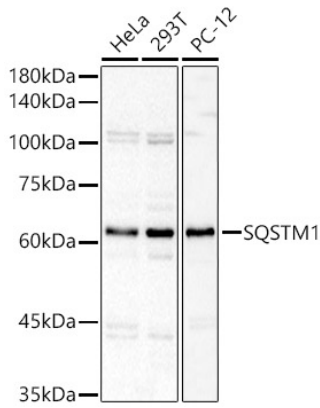
Affinity purification

Storage

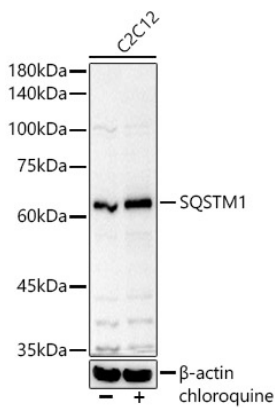
Store at -20°C. Avoid freeze / thaw cycles.

Buffer: PBS with 0.05% proclin300, 50% glycerol, pH7.3.

Validation Data



Western blot analysis of various lysates, using SQSTM1 Rabbit pAb (A22025) at 1:600 dilution.
Secondary antibody: HRP Goat Anti-Rabbit IgG (H+L) (AS014) at 1:10000 dilution.
Lysates/proteins: 25ug per lane.
Blocking buffer: 3% nonfat dry milk in TBST.
Detection: ECL Basic Kit (RM00020).
Exposure time: 3s.



Western blot analysis of lysates from C2C12 cells, using SQSTM1 Rabbit pAb (A22025) at 1:600 dilution. C2C12 cells were treated by Chloroquine (50 μ M) at 37°C for 20 hours.
Secondary antibody: HRP Goat Anti-Rabbit IgG (H+L) (AS014) at 1:10000 dilution.
Lysates/proteins: 25ug per lane.
Blocking buffer: 3% nonfat dry milk in TBST.
Detection: ECL Basic Kit (RM00020).
Exposure time: 3s.