

CD132/IL-2 R gamma Rabbit mAb

Catalog No.: A22037 **Recombinant**

Basic Information

Observed MW

50-70kDa

Calculated MW

42kDa

Category

Primary antibody

Applications

ELISA, WB

Cross-Reactivity

Human, Mouse

CloneNo number

ARC54566

Background

The protein encoded by this gene is an important signaling component of many interleukin receptors, including those of interleukin -2, -4, -7 and -21, and is thus referred to as the common gamma chain. Mutations in this gene cause X-linked severe combined immunodeficiency (XSCID), as well as X-linked combined immunodeficiency (XCID), a less severe immunodeficiency disorder.

Recommended Dilutions

WB 1:1000 - 1:5000

Immunogen Information

Gene ID

3561

Swiss Prot

P31785

Immunogen

A synthetic peptide corresponding to a sequence within amino acids 250-350 of human CD132/IL-2 R gamma (NP_000197.1).

Synonyms

P64; CIDX; IMD4; CD132; SCIDX; IL-2RG; SCIDX1; CD132/IL-2 R gamma

Contact

 | 400-999-6126

 | cn.market@abclonal.com.cn

 | www.abclonal.com.cn

Product Information

Source

Rabbit

Isotype

IgG

Purification

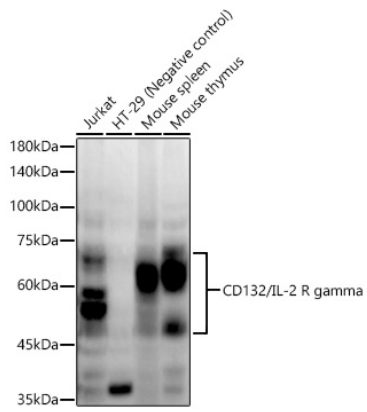
Affinity purification

Storage

Store at -20°C. Avoid freeze / thaw cycles.

Buffer: PBS with 0.05% proclin300, 0.05% BSA, 50% glycerol, pH7.3.

Validation Data



Western blot analysis of extracts of various cell lines, using CD132/IL-2 R gamma antibody (A22037) at 1:2000 dilution.

Secondary antibody: HRP Goat Anti-Rabbit IgG (H+L) (AS014) at 1:10000 dilution.

Lysates/proteins: 25µg per lane.

Blocking buffer: 3% nonfat dry milk in TBST.

Detection: ECL Enhanced Kit (RM00021).

Exposure time: 60s.