

# Annexin A6/Annexin VI Rabbit mAb

Catalog No.: A22038 **Recombinant**

## Basic Information

**Observed MW**

72kDa

**Calculated MW**

76kDa

**Category**

Primary antibody

**Applications**

ELISA, WB, IHC-P

**Cross-Reactivity**

Human, Mouse, Rat

**CloneNo number**

ARC54613

## Background

Annexin VI belongs to a family of calcium-dependent membrane and phospholipid binding proteins. Several members of the annexin family have been implicated in membrane-related events along exocytotic and endocytotic pathways. The annexin VI gene is approximately 60 kbp long and contains 26 exons. It encodes a protein of about 68 kDa that consists of eight 68-amino acid repeats separated by linking sequences of variable lengths. It is highly similar to human annexins I and II sequences, each of which contain four such repeats. Annexin VI has been implicated in mediating the endosome aggregation and vesicle fusion in secreting epithelia during exocytosis. Alternatively spliced transcript variants have been described.

## Recommended Dilutions

**WB** 1:2000 - 1:9000**IHC-P** 1:500 - 1:1000

## Immunogen Information

**Gene ID**

309

**Swiss Prot**

P08133

**Immunogen**

Recombinant fusion protein containing a sequence corresponding to amino acids 324-673 of human Annexin A6/Annexin VI (NP\_001146.2).

**Synonyms**

p68; p70; ANX6; CBP68; CPB-II; Annexin A6/Annexin VI

## Contact

 | 400-999-6126 | [cn.market@abclonal.com.cn](mailto:cn.market@abclonal.com.cn) | [www.abclonal.com.cn](http://www.abclonal.com.cn)

## Product Information

**Source**

Rabbit

**Isotype**

IgG

**Purification**

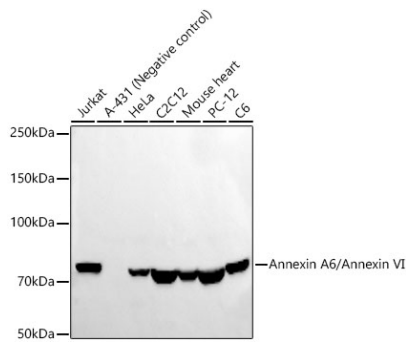
Affinity purification

**Storage**

Store at -20°C. Avoid freeze / thaw cycles.

Buffer: PBS with 0.05% proclin300, 0.05% BSA, 50% glycerol, pH7.3.

## Validation Data



Western blot analysis of various lysates using Annexin A6/Annexin VI Rabbit mAb (A22038) at 1:8000 dilution.

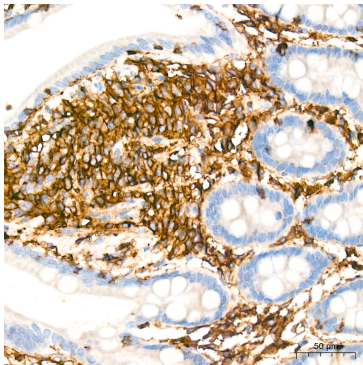
Secondary antibody: HRP Goat Anti-Rabbit IgG (H+L) (AS014) at 1:10000 dilution.

Lysates/proteins: 25µg per lane.

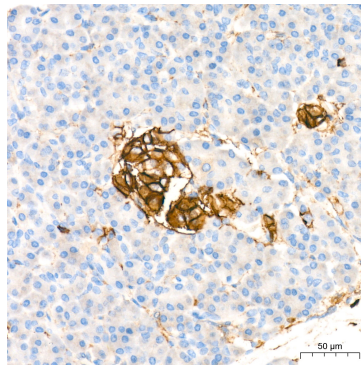
Blocking buffer: 3% nonfat dry milk in TBST.

Detection: ECL Basic Kit (RM00020).

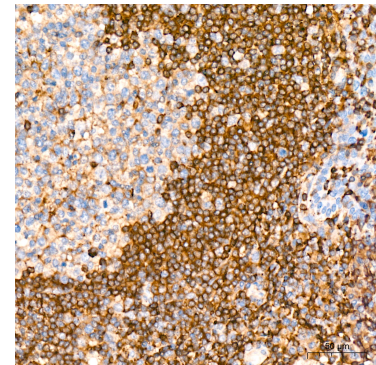
Exposure time: 60s.



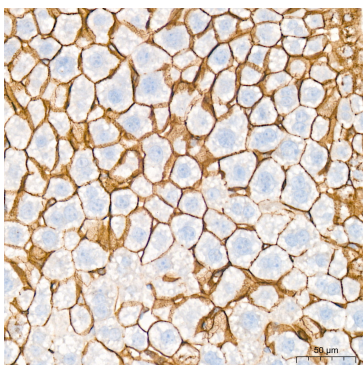
Immunohistochemistry analysis of Annexin A6/Annexin VI in paraffin-embedded human colon tissue using Annexin A6/Annexin VI Rabbit mAb (A22038) at a dilution of 1:800 (40x lens). High pressure antigen retrieval was performed with 0.01 M citrate buffer (pH 6.0) prior to IHC staining.



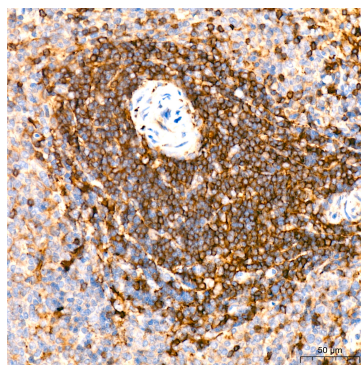
Immunohistochemistry analysis of Annexin A6/Annexin VI in paraffin-embedded human pancreas tissue using Annexin A6/Annexin VI Rabbit mAb (A22038) at a dilution of 1:800 (40x lens). High pressure antigen retrieval was performed with 0.01 M citrate buffer (pH 6.0) prior to IHC staining.



Immunohistochemistry analysis of Annexin A6/Annexin VI in paraffin-embedded human tonsil tissue using Annexin A6/Annexin VI Rabbit mAb (A22038) at a dilution of 1:800 (40x lens). High pressure antigen retrieval was performed with 0.01 M citrate buffer (pH 6.0) prior to IHC staining.



Immunohistochemistry analysis of Annexin A6/Annexin VI in paraffin-embedded mouse liver tissue using Annexin A6/Annexin VI Rabbit mAb (A22038) at a dilution of 1:800 (40x lens). High pressure antigen retrieval was performed with 0.01 M citrate buffer (pH 6.0) prior to IHC staining.



Immunohistochemistry analysis of Annexin A6/Annexin VI in paraffin-embedded rat spleen tissue using Annexin A6/Annexin VI Rabbit mAb (A22038) at a dilution of 1:800 (40x lens). High pressure antigen retrieval was performed with 0.01 M citrate buffer (pH 6.0) prior to IHC staining.