

PBEF/Visfatin/NAMPT Rabbit mAb

Catalog No.: A22044 **Recombinant** **1 Publications**

Basic Information

Observed MW

52kDa

Calculated MW

56kDa

Category

Primary antibody

Applications

ELISA, WB, IHC-P

Cross-Reactivity

Human, Mouse, Rat

CloneNo number

ARC53731

Background

This gene encodes a protein that catalyzes the condensation of nicotinamide with 5-phosphoribosyl-1-pyrophosphate to yield nicotinamide mononucleotide, one step in the biosynthesis of nicotinamide adenine dinucleotide. The protein belongs to the nicotinic acid phosphoribosyltransferase (NAPRTase) family and is thought to be involved in many important biological processes, including metabolism, stress response and aging. This gene has a pseudogene on chromosome 10.

Recommended Dilutions

WB 1:10000 - 1:130000

IHC-P 1:1000 - 1:5000

Immunogen Information

Gene ID

10135

Swiss Prot

P43490

Immunogen

A synthetic peptide corresponding to a sequence within amino acids 300-400 of human PBEF/Visfatin/NAMPT (NP_005737.1).

Synonyms

VF; PBEF; PBEF1; VISFATIN; 1110035O14Rik; PBEF/Visfatin/NAMPT

Contact

 | 400-999-6126

 | cn.market@abclonal.com.cn

 | www.abclonal.com.cn

Product Information

Source

Rabbit

Isotype

IgG

Purification

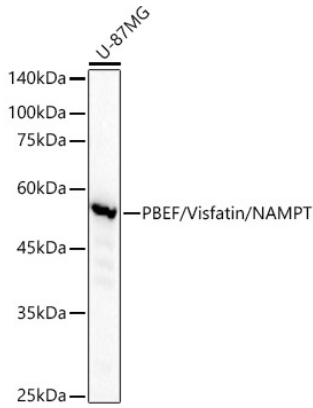
Affinity purification

Storage

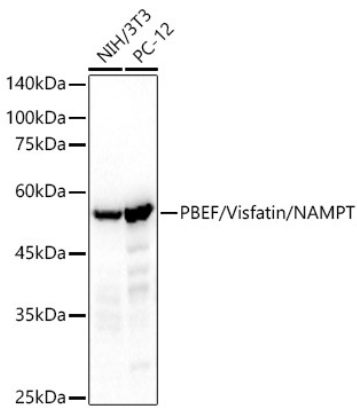
Store at -20°C. Avoid freeze / thaw cycles.

Buffer: PBS with 0.05% proclin300, 0.05% BSA, 50% glycerol, pH7.3.

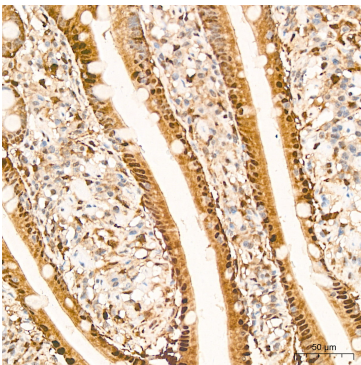
Validation Data



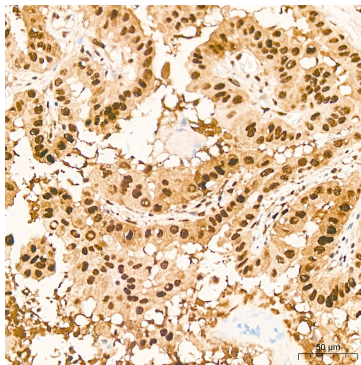
Western blot analysis of lysates from U-87MG cells, using PBEF/Visfatin/NAMPT Rabbit mAb (A22044) at 1:110000 dilution.
Secondary antibody: HRP Goat Anti-Rabbit IgG (H+L) (AS014) at 1:10000 dilution.
Lysates/proteins: 25µg per lane.
Blocking buffer: 3% nonfat dry milk in TBST.
Detection: ECL Basic Kit (RM00020).
Exposure time: 20s.



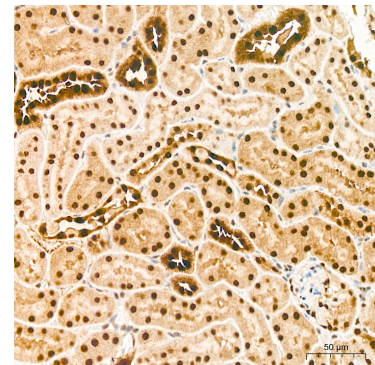
Western blot analysis of various lysates using PBEF/Visfatin/NAMPT Rabbit mAb (A22044) at 1:110000 dilution.
Secondary antibody: HRP Goat Anti-Rabbit IgG (H+L) (AS014) at 1:10000 dilution.
Lysates/proteins: 25µg per lane.
Blocking buffer: 3% nonfat dry milk in TBST.
Detection: ECL Basic Kit (RM00020).
Exposure time: 90s.



Immunohistochemistry analysis of PBEF/Visfatin/NAMPT in paraffin-embedded human small intestine tissue using PBEF/Visfatin/NAMPT Rabbit mAb (A22044) at a dilution of 1:2000 (40x lens). High pressure antigen retrieval was performed with 0.01 M citrate buffer (pH 6.0) prior to IHC staining.

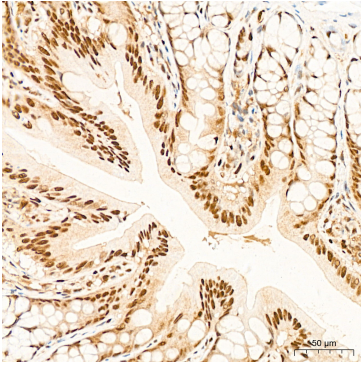


Immunohistochemistry analysis of PBEF/Visfatin/NAMPT in paraffin-embedded human thyroid cancer tissue using PBEF/Visfatin/NAMPT Rabbit mAb (A22044) at a dilution of 1:2000 (40x lens). High pressure antigen retrieval was performed with 0.01 M citrate buffer (pH 6.0) prior to IHC staining.

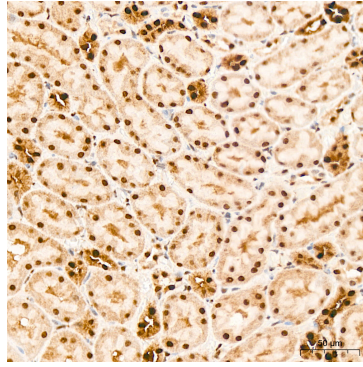


Immunohistochemistry analysis of PBEF/Visfatin/NAMPT in paraffin-embedded mouse kidney tissue using PBEF/Visfatin/NAMPT Rabbit mAb (A22044) at a dilution of 1:2000 (40x lens). High pressure antigen retrieval was performed with 0.01 M citrate buffer (pH 6.0) prior to IHC staining.

Validation Data



Immunohistochemistry analysis of PBEF/Visfatin/NAMPT in paraffin-embedded rat colon tissue using PBEF/Visfatin/NAMPT Rabbit mAb (A22044) at a dilution of 1:2000 (40x lens). High pressure antigen retrieval was performed with 0.01 M citrate buffer (pH 6.0) prior to IHC staining.



Immunohistochemistry analysis of PBEF/Visfatin/NAMPT in paraffin-embedded rat kidney tissue using PBEF/Visfatin/NAMPT Rabbit mAb (A22044) at a dilution of 1:2000 (40x lens). High pressure antigen retrieval was performed with 0.01 M citrate buffer (pH 6.0) prior to IHC staining.