

MTAP Rabbit mAb

Catalog No.: A22045 **Recombinant**

Basic Information

Observed MW

29kDa

Calculated MW

31kDa

Category

Primary antibody

Applications

ELISA, WB

Cross-Reactivity

Human, Mouse, Rat

CloneNo number

ARC54717

Background

This gene encodes an enzyme that plays a major role in polyamine metabolism and is important for the salvage pathway of both adenine and methionine. The encoded enzyme is deficient in many cancers. Multiple alternatively spliced transcript variants have been described for this gene.

Recommended Dilutions

WB 1:1000 - 1:5000

Immunogen Information

Gene ID

4507

Swiss Prot

Q13126

Immunogen

Recombinant fusion protein containing a sequence corresponding to amino acids 1-283 of human MTAP (NP_002442.2).

Synonyms

BDMF; MSAP; DMSFH; LGMBF; DMSMFH; c86fus; HEL-249; MTAP

Contact

☎ | 400-999-6126

✉ | cn.market@abclonal.com.cn

🌐 | www.abclonal.com.cn

Product Information

Source

Rabbit

Isotype

IgG

Purification

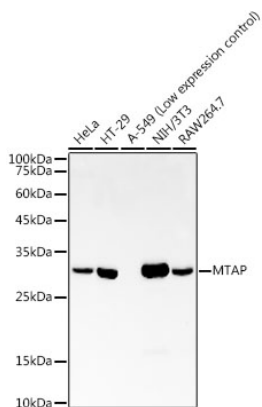
Affinity purification

Storage

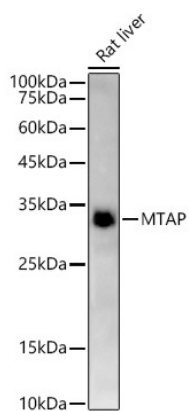
Store at -20°C. Avoid freeze / thaw cycles.

Buffer: PBS with 0.05% proclin300, 0.05% BSA, 50% glycerol, pH7.3.

Validation Data



Western blot analysis of extracts of various cell lines, using MTAP antibody (A22045) at 1:2000 dilution.
Secondary antibody: HRP Goat Anti-Rabbit IgG (H+L) (AS014) at 1:10000 dilution.
Lysates/proteins: 25µg per lane.
Blocking buffer: 3% nonfat dry milk in TBST.
Detection: ECL Basic Kit (RM00020).
Exposure time: 60s.



Western blot analysis of extracts of Rat liver, using MTAP antibody (A22045) at 1:2000 dilution.
Secondary antibody: HRP Goat Anti-Rabbit IgG (H+L) (AS014) at 1:10000 dilution.
Lysates/proteins: 25µg per lane.
Blocking buffer: 3% nonfat dry milk in TBST.
Detection: ECL Enhanced Kit (RM00021).
Exposure time: 120s.