

# Cathepsin G Rabbit mAb

Catalog No.: A22048 **Recombinant**

## Basic Information

### Observed MW

29kDa

### Calculated MW

29kDa

### Category

Primary antibody

### Applications

ELISA, WB

### Cross-Reactivity

Human, Mouse, Rat

### CloneNo number

ARC54792

## Background

The protein encoded by this gene, a member of the peptidase S1 protein family, is found in azurophil granules of neutrophilic polymorphonuclear leukocytes. The encoded protease has a specificity similar to that of chymotrypsin C, and may participate in the killing and digestion of engulfed pathogens, and in connective tissue remodeling at sites of inflammation. In addition, the encoded protein is antimicrobial, with bacteriocidal activity against *S. aureus* and *N. gonorrhoeae*. Transcript variants utilizing alternative polyadenylation signals exist for this gene.

## Recommended Dilutions

WB 1:500 - 1:1000

## Immunogen Information

### Gene ID

1511

### Swiss Prot

P08311

### Immunogen

A synthetic peptide corresponding to a sequence within amino acids 156-255 of human Cathepsin G (NP\_001902.1).

### Synonyms

CG; CATG; Cathepsin G

## Contact

 | 400-999-6126

 | [cn.market@abclonal.com.cn](mailto:cn.market@abclonal.com.cn)

 | [www.abclonal.com.cn](http://www.abclonal.com.cn)

## Product Information

### Source

Rabbit

### Isotype

IgG

### Purification

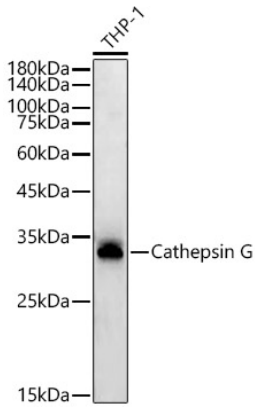
Affinity purification

### Storage

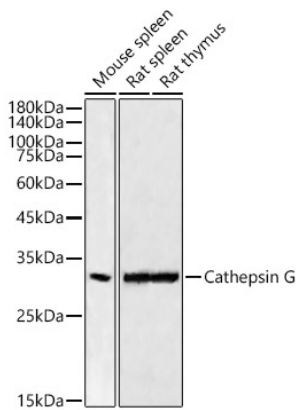
Store at -20°C. Avoid freeze / thaw cycles.

Buffer: PBS with 0.05% proclin300, 0.05% BSA, 50% glycerol, pH7.3.

## Validation Data



Western blot analysis of extracts of THP-1 cells, using Cathepsin G antibody (A22048) at 1:1000 dilution.  
Secondary antibody: HRP Goat Anti-Rabbit IgG (H+L) (AS014) at 1:10000 dilution.  
Lysates/proteins: 25µg per lane.  
Blocking buffer: 3% nonfat dry milk in TBST.  
Detection: ECL Basic Kit (RM00020).  
Exposure time: 60s.



Western blot analysis of extracts of various lysates, using Cathepsin G Rabbit mAb (A22048) at 1:1000 dilution.  
Secondary antibody: HRP Goat Anti-Rabbit IgG (H+L) (AS014) at 1:10000 dilution.  
Lysates/proteins: 25µg per lane.  
Blocking buffer: 3% nonfat dry milk in TBST.  
Detection: ECL Basic Kit (RM00020).  
Exposure time: 60s.