

Acetyl-Histone H3-K27 Rabbit mAb

Catalog No.: A22054 **Recombinant** **1 Publications**

Basic Information

Observed MW

17kDa

Calculated MW

16kDa

Category

Primary antibody

Applications

ELISA, WB, IHC-P, IP, ChIP, ChIP-seq, CUT&Tag

Cross-Reactivity

Human, Mouse, Rat, Other (Wide Range Predicted)

CloneNo number

ARC53902

Recommended Dilutions

WB 1:2000 - 1:20000

IHC-P 1:50 - 1:200

IP 0.5µg-4µg antibody for 200µg-400µg extracts of whole cells

ChIP 5µg antibody for 5µg-10µg of Chromatin

ChIP-seq 1:20 - 1:100

CUT&Tag 10⁵ cells /1 µg

Contact

 | 400-999-6126

 | cn.market@abclonal.com.cn

 | www.abclonal.com.cn

Background

Histones are basic nuclear proteins that are responsible for the nucleosome structure of the chromosomal fiber in eukaryotes. This structure consists of approximately 146 bp of DNA wrapped around a nucleosome, an octamer composed of pairs of each of the four core histones (H2A, H2B, H3, and H4). The chromatin fiber is further compacted through the interaction of a linker histone, H1, with the DNA between the nucleosomes to form higher order chromatin structures. This gene is intronless and encodes a replication-dependent histone that is a member of the histone H3 family. Transcripts from this gene lack polyA tails; instead, they contain a palindromic termination element. This gene is found in the large histone gene cluster on chromosome 6p22-p21.3.

Immunogen Information

Gene ID

8290/8350

Swiss Prot

Q16695/P68431

Immunogen

A synthetic acetylated peptide around K4 & K27 of human Histone (NP_003520.1).

Synonyms

H3/A; H3C2; H3C3; H3C4; H3C6; H3C7; H3C8; H3FA; H3C10; H3C11; H3C12; HIST1H3A; Acetyl-Histone H3-K4/K9/K14/K18/K23/K27

Product Information

Source

Rabbit

Isotype

IgG

Purification

Affinity purification

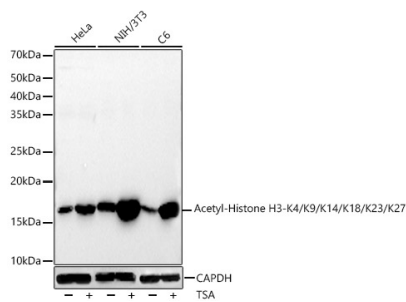
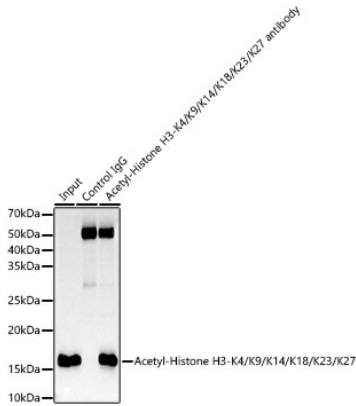
Storage

Store at -20°C. Avoid freeze / thaw cycles.

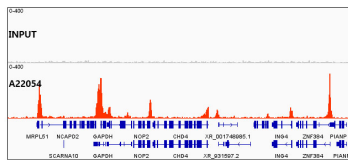
Buffer: PBS with 0.05% proclin300, 0.05% BSA, 50% glycerol, pH7.3.

Validation Data

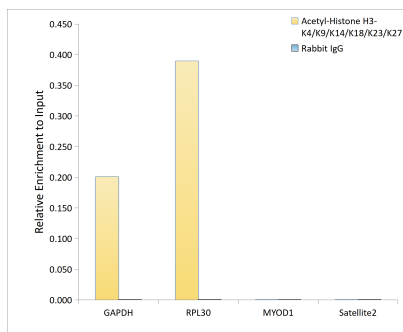
Immunoprecipitation analysis of 600 µg extracts of NIH/3T3 cells using 5 µg Acetyl-Histone H3-K4/K9/K14/K18/K23/K27 antibody (A22054). Western blot was performed from the immunoprecipitate using Acetyl-Histone H3-K4/K9/K14/K18/K23/K27 antibody (A22054) at a dilution of 1:10000.



Western blot analysis of various lysates, using Acetyl-Histone H3-K4/K9/K14/K18/K23/K27 Rabbit mAb (A22054) at 1:20000 dilution. HeLa, NIH/3T3 and C6 cells were treated by TSA (1 µM) at 37°C for 18 hours. Secondary antibody: HRP-conjugated Goat anti-Rabbit IgG (H+L) (AS014) at 1:10000 dilution. Lysates/proteins: 25 µg per lane. Blocking buffer: 3% nonfat dry milk in TBST. Detection: ECL Basic Kit (RM00020). Exposure time: 30s.

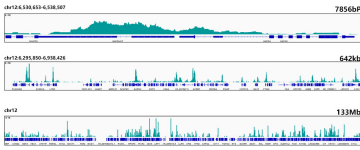


Chromatin immunoprecipitations were performed with cross-linked chromatin from HeLa cells and Acetyl-Histone H3-K4/K9/K14/K18/K23/K27 Rabbit mAb (A22054). The ChIP sequencing results indicate the enrichment pattern of Acetyl-Histone H3-K4/K9/K14/K18/K23/K27 in selected genomic region and representative gene loci (GAPDH), as shown in figure.

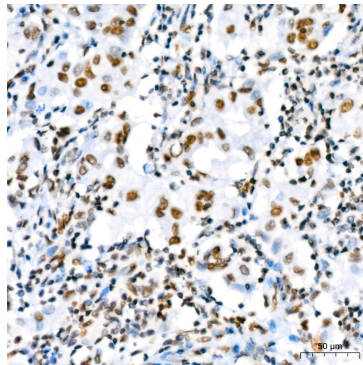


Chromatin immunoprecipitation analysis of extracts of HeLa cells, using Acetyl-Histone H3-K4/K9/K14/K18/K23/K27 antibody (A22054) and rabbit IgG. The amount of immunoprecipitated DNA was checked by quantitative PCR. Histogram was constructed by the ratios of the immunoprecipitated DNA to the input.

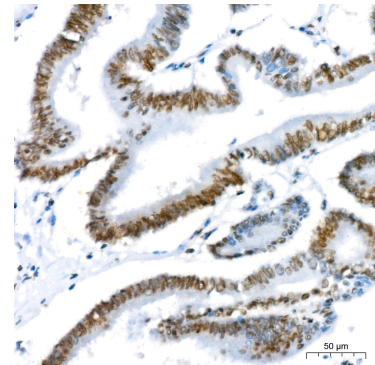
Validation Data



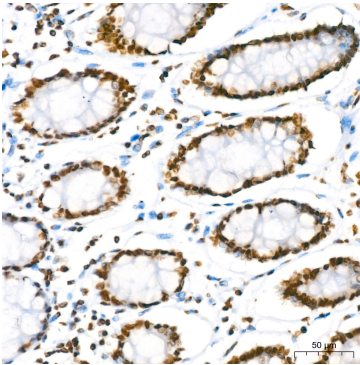
CUT&Tag was performed using the CUT&Tag Assay Kit (pAG-Tn5) for Illumina(RK20265) from 10^5 K562 cells with 1 μ g Acetyl-Histone H3-K4/K9/K14/K18/K23/K27 antibody (A22054), along with a Goat Anti-Rabbit IgG(H+L). The CUT&Tag results indicate the enrichment pattern of Acetyl-Histone H3-K4/K9/K14/K18/K23/K27 in representative gene loci (RPL30), as shown in figure.



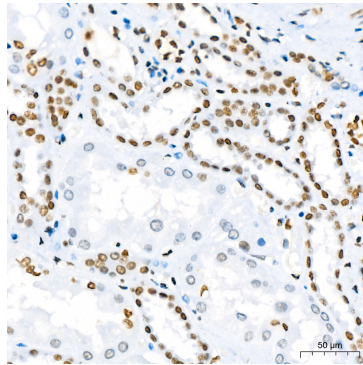
Immunohistochemistry analysis of paraffin-embedded Human breast cancer using Acetyl-Histone H3-K4/K9/K14/K18/K23/K27 Rabbit mAb (A22054) at dilution of 1:200 (40x lens). High pressure antigen retrieval performed with 0.01M Citrate Bufferr (pH 6.0) prior to IHC staining.



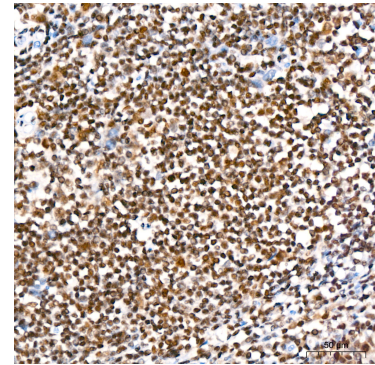
Immunohistochemistry analysis of paraffin-embedded Human colon carcinoma using Acetyl-Histone H3-K4/K9/K14/K18/K23/K27 Rabbit mAb (A22054) at dilution of 1:200 (40x lens). High pressure antigen retrieval performed with 0.01M Citrate Bufferr (pH 6.0) prior to IHC staining.



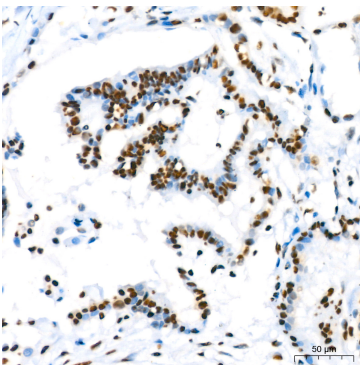
Immunohistochemistry analysis of paraffin-embedded Human colon using Acetyl-Histone H3-K4/K9/K14/K18/K23/K27 Rabbit mAb (A22054) at dilution of 1:200 (40x lens). High pressure antigen retrieval performed with 0.01M Citrate Bufferr (pH 6.0) prior to IHC staining.



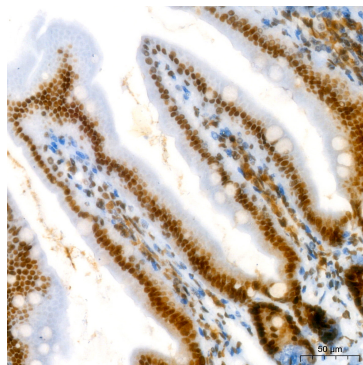
Immunohistochemistry analysis of paraffin-embedded Human kidney using Acetyl-Histone H3-K4/K9/K14/K18/K23/K27 Rabbit mAb (A22054) at dilution of 1:200 (40x lens). High pressure antigen retrieval performed with 0.01M Citrate Bufferr (pH 6.0) prior to IHC staining.



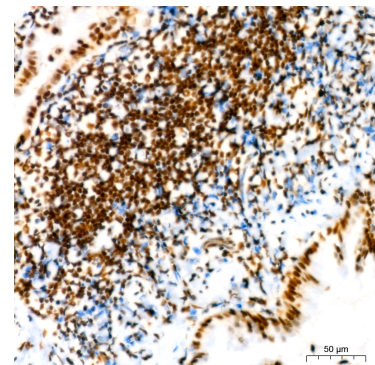
Immunohistochemistry analysis of paraffin-embedded Human spleen using Acetyl-Histone H3-K4/K9/K14/K18/K23/K27 Rabbit mAb (A22054) at dilution of 1:200 (40x lens). High pressure antigen retrieval performed with 0.01M Citrate Bufferr (pH 6.0) prior to IHC staining.



Immunohistochemistry analysis of paraffin-embedded Human thyroid cancer using Acetyl-Histone H3-K4/K9/K14/K18/K23/K27 Rabbit mAb (A22054) at dilution of 1:200 (40x lens). High pressure antigen retrieval performed with 0.01M Citrate Bufferr (pH 6.0) prior to IHC staining.



Immunohistochemistry analysis of paraffin-embedded Mouse intestin using Acetyl-Histone H3-K4/K9/K14/K18/K23/K27 Rabbit mAb (A22054) at dilution of 1:200 (40x lens). High pressure antigen retrieval performed with 0.01M Citrate Bufferr (pH 6.0) prior to IHC staining.



Immunohistochemistry analysis of paraffin-embedded Rat lung using Acetyl-Histone H3-K4/K9/K14/K18/K23/K27 Rabbit mAb (A22054) at dilution of 1:200 (40x lens). High pressure antigen retrieval performed with 0.01M Citrate Bufferr (pH 6.0) prior to IHC staining.