

# MyoD1 Rabbit mAb

Catalog No.: A22059 **Recombinant**

## Basic Information

### Observed MW

45kDa

### Calculated MW

35kDa

### Category

Primary antibody

### Applications

ELISA, WB

### Cross-Reactivity

Human

### CloneNo number

ARC54784

## Background

This gene encodes a nuclear protein that belongs to the basic helix-loop-helix family of transcription factors and the myogenic factors subfamily. It regulates muscle cell differentiation by inducing cell cycle arrest, a prerequisite for myogenic initiation. The protein is also involved in muscle regeneration. It activates its own transcription which may stabilize commitment to myogenesis.

## Recommended Dilutions

WB 1:500 - 1:1000

## Immunogen Information

### Gene ID

4654

### Swiss Prot

P15172

### Immunogen

A synthetic peptide corresponding to a sequence within amino acids 100-200 of human MyoD1 (NP\_002469.2).

### Synonyms

PUM; MYF3; MYOD; CMYP17; bHLHc1; MYODRIF; MyoD1

## Contact

 | 400-999-6126

 | [cn.market@abclonal.com.cn](mailto:cn.market@abclonal.com.cn)

 | [www.abclonal.com.cn](http://www.abclonal.com.cn)

## Product Information

### Source

Rabbit

### Isotype

IgG

### Purification

Affinity purification

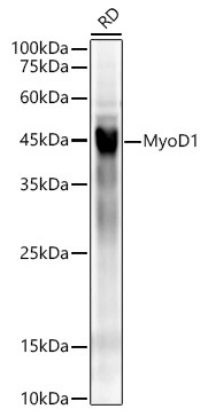
### Storage

Store at -20°C. Avoid freeze / thaw cycles.

Buffer: PBS with 0.05% proclin300, 0.05% BSA, 50% glycerol, pH7.3.

## Validation Data

---



Western blot analysis of lysates from RD cells, using MyoD1 Rabbit mAb (A22059) at 1:700 dilution.  
Secondary antibody: HRP-conjugated Goat anti-Rabbit IgG (H+L) (AS014) at 1:10000 dilution.  
Lysates/proteins: 25µg per lane.  
Blocking buffer: 3% nonfat dry milk in TBST.  
Detection: ECL Enhanced Kit (RM00021).  
Exposure time: 180s.