

ABflo® 488 Rabbit anti-Human CD27 mAb

Catalog No.: A22063

Basic Information

Observed MW

Refer to figures

Calculated MW

29kDa

Category

Primary antibody

Applications

FC

Cross-Reactivity

Human

CloneNo number

ARC54542-ABf488

Conjugate

ABflo® 488. Ex:491nm. Em:516nm.

Recommended Dilutions

FC 5 µl per 10⁶ cells in
100 µl volume

Background

The protein encoded by this gene is a member of the TNF-receptor superfamily. This receptor is required for generation and long-term maintenance of T cell immunity. It binds to ligand CD70, and plays a key role in regulating B-cell activation and immunoglobulin synthesis. This receptor transduces signals that lead to the activation of NF-kappaB and MAPK8/JNK. Adaptor proteins TRAF2 and TRAF5 have been shown to mediate the signaling process of this receptor. CD27-binding protein (SIVA), a proapoptotic protein, can bind to this receptor and is thought to play an important role in the apoptosis induced by this receptor.

Immunogen Information

Gene ID

939

Swiss Prot

P26842

Immunogen

Recombinant fusion protein containing a sequence corresponding to amino acids 21-192 of human CD27 (NP_001233.2).

Synonyms

T14; S152; Tp55; TNFRSF7; S152. LPFS2

Contact

☎ | 400-999-6126

✉ | cn.market@abclonal.com.cn

🌐 | www.abclonal.com.cn

Product Information

Source

Rabbit

Isotype

IgG

Purification

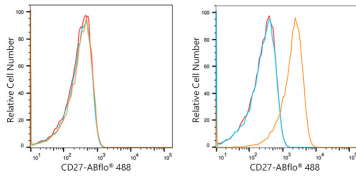
Affinity purification

Storage

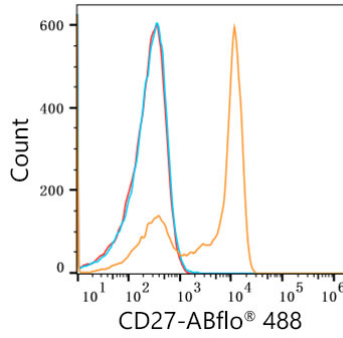
Store at 2-8°C. Avoid freeze.

Buffer: PBS with 0.03% proclin300,0.2% BSA,pH7.3.

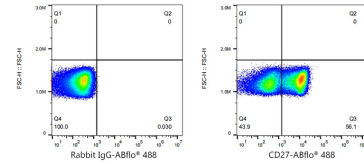
Validation Data



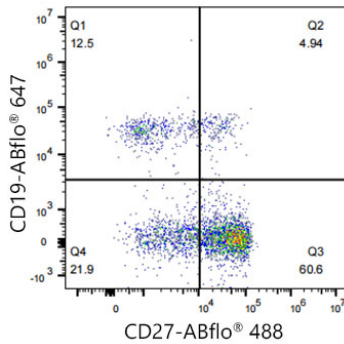
Flow cytometry:1X10⁶ HEL cells (negative control,left) and Daudi cells (right) were surface-stained with ABflo® 488 Rabbit anti-Human CD27 mAb(A22063,5 µl/Test,orange line) or ABflo® 488 Rabbit IgG isotype control (A22069,5 µl/Test,blue line). Non-fluorescently stained cells were used as blank control (red line).



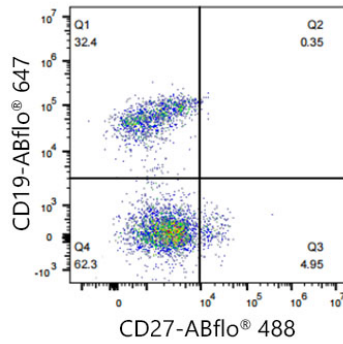
Flow cytometry:1X10⁶ Human PBMC were surface-stained with ABflo® 488 Rabbit anti-Human CD27 mAb(A22063,5 µl/Test,orange line) or ABflo® 488 Rabbit IgG isotype control (A22069,5 µl/Test,blue line).Non-fluorescently stained Human PBMC was used as blank control (red line).



Flow cytometry:1X10⁶ Human PBMC cells were surface-stained with ABflo® 488 Rabbit IgG isotype control (A22069,5 µl/Test,left) or ABflo® 488 Rabbit anti-Human CD27 mAb(A22063,5 µl/Test,right).



Flow cytometry:1X10⁶ Human PBMC cells were surface-stained with ABflo® 488 Rabbit IgG isotype control (A22069,5 µl/Test) or ABflo® 488 Rabbit anti-Human CD27 mAb(A22063,5 µl/Test).The cells were simultaneously stained with ABflo® 647 Rabbit anti-Human/Monkey CD19 mAb(A23009]5 µl/Test).



Flow cytometry:1X10⁶ Monkey PBMC cells were surface-stained with ABflo® 488 Rabbit IgG isotype control (A22069,5 µl/Test) or ABflo® 488 Rabbit anti-Human CD27 mAb(A22063,5 µl/Test).The cells were simultaneously stained with ABflo® 647 Rabbit anti-Human/Monkey CD19 mAb(A23009]5 µl/Test).