

# ABflo® 488 Rabbit anti-Human LAMP1/CD107a mAb

Catalog No.: A22067

## Basic Information

### Observed MW

Refer to figures

### Calculated MW

38kDa/45kDa

### Category

Primary antibody

### Applications

FC (intra)

### Cross-Reactivity

Human

### CloneNo number

ARC52154-ABf488

### Conjugate

ABflo® 488. Ex:491nm. Em:516nm.

## Recommended Dilutions

**FC (intra)**      5 µl per 10<sup>6</sup> cells in  
                                 100 µl volume

## Background

The protein encoded by this gene is a member of a family of membrane glycoproteins. This glycoprotein provides selectins with carbohydrate ligands. It may also play a role in tumor cell metastasis.

## Immunogen Information

### Gene ID

3916

### Swiss Prot

P11279

### Immunogen

Recombinant fusion protein containing a sequence corresponding to amino acids 29-382 of human LAMP1/CD107a (NP\_005552.3).

### Synonyms

LAMPA; CD107a; LGP120

## Contact

☎ | 400-999-6126

✉ | [cn.market@abclonal.com.cn](mailto:cn.market@abclonal.com.cn)

🌐 | [www.abclonal.com.cn](http://www.abclonal.com.cn)

## Product Information

### Source

Rabbit

### Isotype

IgG

### Purification

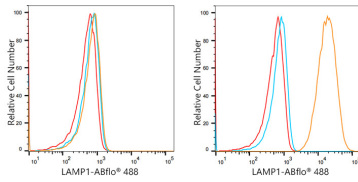
Affinity purification

### Storage

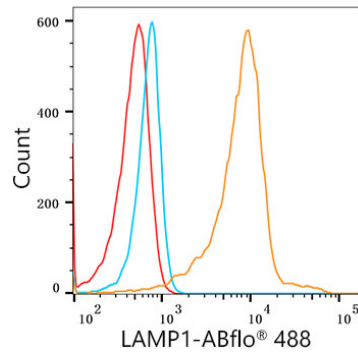
Store at 2-8°C. Avoid freeze.

Buffer: PBS with 0.03% proclin300,0.2% BSA,pH7.3.

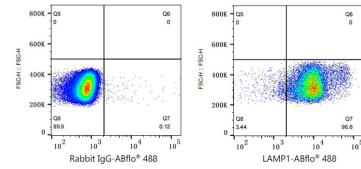
## Validation Data



Flow cytometry:  $1 \times 10^6$  knockout (KO) HeLa cells (negative control, left) and HeLa cells (right) were intracellularly-stained with ABflo® 488 Rabbit anti-Human LAMP1 mAb (A22067,5  $\mu\text{l}/\text{Test}$ , orange line) or ABflo® 488 Rabbit IgG isotype control (A22069,5  $\mu\text{l}/\text{Test}$ , blue line). Non-fluorescently stained cells were used as blank control (red line).



Flow cytometry:  $1 \times 10^6$  Human PBMC were intracellularly-stained with ABflo® 488 Rabbit anti-Human LAMP1 mAb (A22067,5  $\mu\text{l}/\text{Test}$ , orange line) or ABflo® 488 Rabbit IgG isotype control (A22069,5  $\mu\text{l}/\text{Test}$ , blue line). Non-fluorescently stained Human PBMC was used as blank control (red line).



Flow cytometry:  $1 \times 10^6$  Human PBMC cells were intracellularly-stained with ABflo® 488 Rabbit IgG isotype control (A22069,5  $\mu\text{l}/\text{Test}$ , left) or ABflo® 488 Rabbit anti-Human LAMP1 mAb (A22067,5  $\mu\text{l}/\text{Test}$ , right).