

# ABflo® 647 Rabbit IgG isotype control

Catalog No.: A22070

## Basic Information

---

### Observed MW

### Calculated MW

### Category

Primary antibody

### Applications

FC

### Cross-Reactivity

### CloneNo number

ARC5105-10-ABf647

### Conjugate

ABflo® 647. Ex:648nm. Em:664nm.

## Background

---

The isotype of a primary antibody and the application it is being used in can result in background staining. Primary antibody background noise can be caused by binding to Fc receptors on target cells; by non-specific interactions with cellular proteins, carbohydrates, and lipids; or by cell autofluorescence. Isotype control antibodies can act as negative controls to help differentiate non-specific background signal from specific antibody signal because they have no relevant specificity to a target antigen. An isotype control antibody should have the same immunoglobulin type and be used at the same concentration as the test antibody. ABflo® 647 Excitation: 651 nm; Emission: 671 nm; Laser: Red Laser.

## Recommended Dilutions

---

FC 5 µl per 10<sup>6</sup> cells in  
100 µl volume

## Immunogen Information

---

### Gene ID

### Swiss Prot

### Immunogen

A synthesized peptide derived from rabbit IgG isotype control

### Synonyms

## Contact

---

☎ | 400-999-6126

✉ | [cn.market@abclonal.com.cn](mailto:cn.market@abclonal.com.cn)

🌐 | [www.abclonal.com.cn](http://www.abclonal.com.cn)

## Product Information

---

### Source

Rabbit

### Isotype

IgG

### Purification

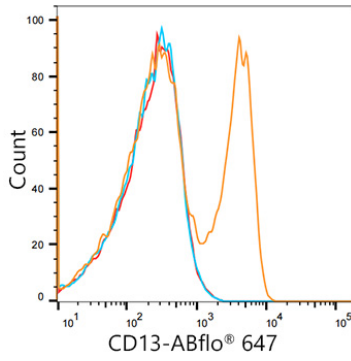
Affinity purification

### Storage

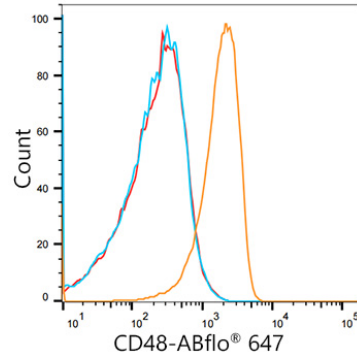
Store at 2-8°C. Avoid freeze.

Buffer: PBS with 0.03% proclin300, 0.2% BSA, pH7.3.

## Validation Data



Flow cytometry:  $1 \times 10^6$  Human PBMC (negative control) were surface-stained with ABflo® 647 Rabbit anti-Human CD13/ANPEP mAb (A21945, 5  $\mu$ l/Test, orange line) or ABflo® 647 Rabbit IgG isotype control (A22070, 5  $\mu$ l/Test, blue line). Non-fluorescently stained Human PBMC were used as blank control (red line).



Flow cytometry:  $1 \times 10^6$  Human PBMC (negative control) were surface-stained with ABflo® 647 Rabbit anti-Human CD48 mAb (A21946, 5  $\mu$ l/Test, orange line) or ABflo® 647 Rabbit IgG isotype control (A22070, 5  $\mu$ l/Test, blue line). Non-fluorescently stained Human PBMC were used as blank control (red line).