

Collagen I/COL1A1 Rabbit mAb

Catalog No.: A22089 **Recombinant** **1 Publications**

Basic Information

Observed MW

Refer to figures

Calculated MW

139kDa

Category

Primary antibody

Applications

WB,IF/ICC,ELISA

Cross-Reactivity

Mouse, Rat

CloneNo number

ARC53613

Background

This gene encodes the pro-alpha1 chains of type I collagen whose triple helix comprises two alpha1 chains and one alpha2 chain. Type I is a fibril-forming collagen found in most connective tissues and is abundant in bone, cornea, dermis and tendon. Mutations in this gene are associated with osteogenesis imperfecta types I-IV, Ehlers-Danlos syndrome type VIIA, Ehlers-Danlos syndrome Classical type, Caffey Disease and idiopathic osteoporosis. Reciprocal translocations between chromosomes 17 and 22, where this gene and the gene for platelet-derived growth factor beta are located, are associated with a particular type of skin tumor called dermatofibrosarcoma protuberans, resulting from unregulated expression of the growth factor. Two transcripts, resulting from the use of alternate polyadenylation signals, have been identified for this gene.

Recommended Dilutions

WB 1:1000 - 1:5000

IF/ICC 1:50 - 1:200

ELISA Recommended starting concentration is 1 µg/mL. Please optimize the concentration based on your specific assay requirements.

Immunogen Information

Gene ID

1277

Swiss Prot

P02452

Immunogen

A synthetic peptide corresponding to a sequence within amino acids 1100-1200 of human Collagen I/COL1A1 (NP_000079.2).

Synonyms

OI1; OI2; OI3; OI4; EDSC; CAFYD; EDSARTH1; Collagen I/COL1A1

Contact

☎ | 400-999-6126

✉ | cn.market@abclonal.com.cn

🌐 | www.abclonal.com.cn

Product Information

Source

Rabbit

Isotype

IgG

Purification

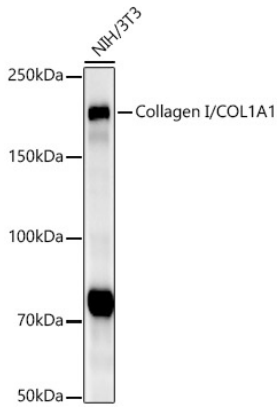
Affinity purification

Storage

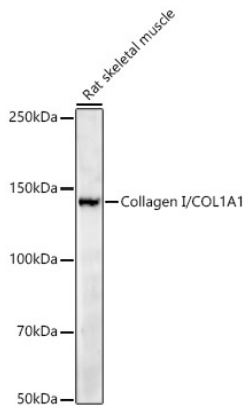
Store at -20°C. Avoid freeze / thaw cycles.

Buffer: PBS with 0.05% proclin300,0.05% BSA,50% glycerol,pH7.3.

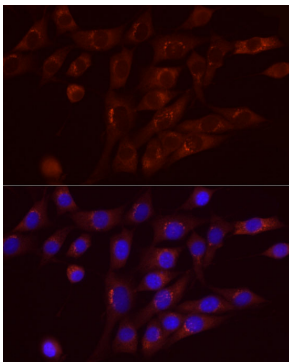
Validation Data



Western blot analysis of lysates from NIH/3T3 cells, using Collagen I/COL1A1 Rabbit mAb (A22089) at 1:3000 dilution.
Secondary antibody: HRP-conjugated Goat anti-Rabbit IgG (H+L) (AS014) at 1:10000 dilution.
Lysates/proteins: 25µg per lane.
Blocking buffer: 3% nonfat dry milk in TBST.
Detection: ECL Enhanced Kit (RM00021).
Exposure time: 60s.



Western blot analysis of lysates from Rat skeletal muscle, using Collagen I/COL1A1 Rabbit mAb (A22089) at 1:3000 dilution.
Secondary antibody: HRP-conjugated Goat anti-Rabbit IgG (H+L) (AS014) at 1:10000 dilution.
Lysates/proteins: 25µg per lane.
Blocking buffer: 3% nonfat dry milk in TBST.
Detection: ECL Enhanced Kit (RM00021).
Exposure time: 60s.



Immunofluorescence analysis of NIH/3T3 cells using Collagen I/COL1A1 Rabbit mAb (A22089) at dilution of 1:100 (40x lens).
Secondary antibody: Cy3-conjugated Goat anti-Rabbit IgG (H+L) (AS007) at 1:500 dilution. Blue: DAPI for nuclear staining.