

Apolipoprotein C3 Rabbit mAb

Catalog No.: A2209 **Recombinant**

Basic Information

Observed MW

11kDa

Calculated MW

11kDa

Category

Primary antibody

Applications

ELISA, WB, IHC-P, IF/ICC

Cross-Reactivity

Human, Mouse

CloneNo number

ARC1886

Background

This gene encodes a protein component of triglyceride (TG)-rich lipoproteins (TRLs) including very low density lipoproteins (VLDL), high density lipoproteins (HDL) and chylomicrons. The encoded protein plays a role in the metabolism of these TRLs through multiple modes. This protein has been shown to promote the secretion of VLDL1, inhibit lipoprotein lipase enzyme activity, and delay catabolism of TRL remnants. Mutations in this gene are associated with low plasma triglyceride levels and reduced risk of ischemic cardiovascular disease, and hyperalphalipoproteinemia, which is characterized by elevated levels of high density lipoprotein (HDL) and HDL cholesterol in human patients. This gene and other related genes comprise an apolipoprotein gene cluster on chromosome 11.

Recommended Dilutions

WB	1:500 - 1:1000
IHC-P	1:50 - 1:200
IF/ICC	1:50 - 1:200

Immunogen Information

Gene ID

345

Swiss Prot

P02656

Immunogen

A synthetic peptide corresponding to a sequence within amino acids 1-99 of human Apolipoprotein C3 (P02656).

Synonyms

Apo-C3; ApoC-3; APOCIII; Apolipoprotein C3

Contact

 | 400-999-6126 | cn.market@abclonal.com.cn | www.abclonal.com.cn

Product Information

Source

Rabbit

Isotype

IgG

Purification

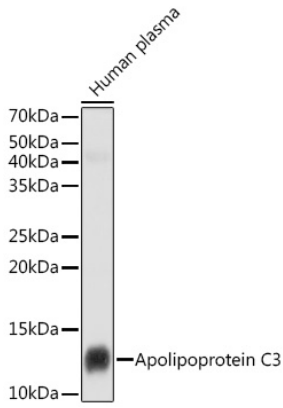
Affinity purification

Storage

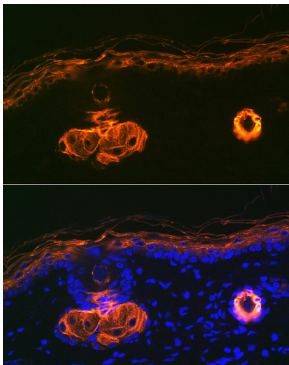
Store at -20°C. Avoid freeze / thaw cycles.

Buffer: PBS with 0.02% sodium azide, 0.05% BSA, 50% glycerol, pH7.3.

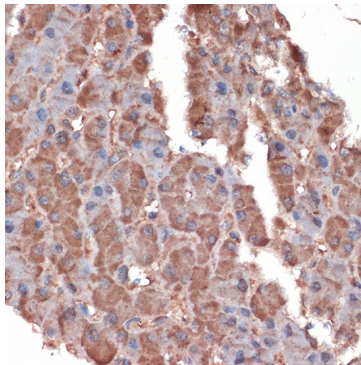
Validation Data



Western blot analysis of lysates from Human plasma , using Apolipoprotein C3 Rabbit mAb (A2209) at 1:1000 dilution.
Secondary antibody: HRP Goat Anti-Rabbit IgG (H+L) (AS014) at 1:10000 dilution.
Lysates/proteins: 25µg per lane.
Blocking buffer: 3% nonfat dry milk in TBST.
Detection: ECL Basic Kit (RM00020).
Exposure time: 5s.



Immunofluorescence analysis of paraffin-embedded mouse liver using Apolipoprotein C3 Rabbit mAb (A2209) at dilution of 1:100 (40x lens). Secondary antibody: Cy3 Goat Anti-Rabbit IgG (H+L) (AS007) at 1:500 dilution. Blue: DAPI for nuclear staining.



Immunohistochemistry analysis of paraffin-embedded human liver using Apolipoprotein C3 Rabbit mAb (A2209) at dilution of 1:100 (40x lens). Perform microwave antigen retrieval with 10 mM Tris/EDTA buffer pH 9.0 before commencing with IHC staining protocol.