

# AAK1 Rabbit pAb

**Catalog No.: A22105**

## Basic Information

**Observed MW**

104 kDa

**Calculated MW**

103 kDa

**Category**

Primary antibody

**Applications**

WB, ELISA

**Cross-Reactivity**

Human

## Background

This gene encodes a member of the SNF1 subfamily of serine/threonine protein kinases. Adaptor-related protein complex 2 (AP-2 complexes) functions during receptor-mediated endocytosis to trigger clathrin assembly, interact with membrane-bound receptors, and recruit endocytic accessory factors. The encoded protein interacts with and phosphorylates a subunit of the AP-2 complex, which promotes binding of AP-2 to sorting signals found in membrane-bound receptors and subsequent receptor endocytosis. Its kinase activity is stimulated by clathrin. This kinase has been shown to play an important role in regulating the clathrin-mediated endocytosis of the rabies virus, facilitating infection. Inhibitors of this kinase are being studied as candidate therapeutics to disrupt the entry of viruses, including SARS-CoV-2, into target cells. It is also involved in positive regulation of Notch pathway signaling in mammals. Alternatively spliced transcript variants have been described, but their biological validity has not been determined.

## Recommended Dilutions

**WB** 1:500 - 1:1000**ELISA** Recommended starting concentration is 1 µg/mL. Please optimize the concentration based on your specific assay requirements.

## Immunogen Information

**Gene ID**

22848

**Swiss Prot**

Q2M2I8

**Immunogen**

Synthetic peptide. This information is considered to be commercially sensitive.

**Synonyms**

## Contact

 | 400-999-6126 | [cn.market@abclonal.com.cn](mailto:cn.market@abclonal.com.cn) | [www.abclonal.com.cn](http://www.abclonal.com.cn)

## Product Information

**Source**

Rabbit

**Isotype**

IgG

**Purification**

Affinity purification

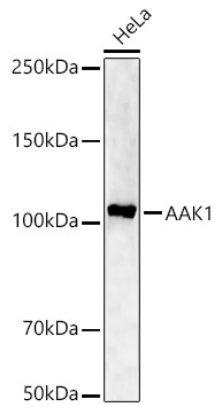
**Storage**

Store at -20°C. Avoid freeze / thaw cycles.

Buffer: PBS containing 50% glycerol, preserved with proclin300 or sodium azide (as specified on the Certificate of Analysis), pH 7.3.

## Validation Data

---



Western blot analysis of lysates from HeLa cells, using AAK1 Rabbit pAb (A22105) at 1:1000 dilution.  
Secondary antibody: HRP-conjugated Goat anti-Rabbit IgG (H+L) (AS014) at 1:10000 dilution.  
Lysates/proteins: 25µg per lane.  
Blocking buffer: 3% nonfat dry milk in TBST.  
Detection: ECL Enhanced Kit (RM00021).  
Exposure time: 90s.