

RBM20 Rabbit pAb

Catalog No.: A22117

Basic Information

Observed MW

150kDa

Calculated MW

134kDa

Category

Primary antibody

Applications

WB, ELISA

Cross-Reactivity

Human

Background

This gene encodes a protein that binds RNA and regulates splicing. Mutations in this gene have been associated with familial dilated cardiomyopathy.

Recommended Dilutions

WB 1:500 - 1:1000

ELISA Recommended starting concentration is 1 µg/mL. Please optimize the concentration based on your specific assay requirements.

Immunogen Information

Gene ID

282996

Swiss Prot

Q5T481

Immunogen

Recombinant protein (or fragment). This information is considered to be commercially sensitive.

Synonyms

Contact

 | 400-999-6126

 | cn.market@abclonal.com.cn

 | www.abclonal.com.cn

Product Information

Source

Rabbit

Isotype

IgG

Purification

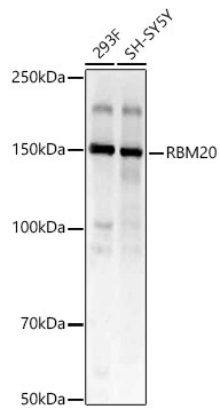
Affinity purification

Storage

Store at -20°C. Avoid freeze / thaw cycles.

Buffer: PBS containing 50% glycerol, preserved with proclin300 or sodium azide (as specified on the Certificate of Analysis), pH 7.3.

Validation Data



Western blot analysis of various lysates, using RBM20 Rabbit pAb (A22117) at 1:400 dilution.
Secondary antibody: HRP-conjugated Goat anti-Rabbit IgG (H+L) (AS014) at 1:10000 dilution.
Lysates/proteins: 25µg per lane.
Blocking buffer: 3% nonfat dry milk in TBST.
Detection: ECL Basic Kit (RM00020).
Exposure time: 10s.