

TRAC Rabbit pAb

Catalog No.: A22122

Basic Information

Observed MW

31kDa

Calculated MW

16kDa

Category

Primary antibody

Applications

WB, ELISA

Cross-Reactivity

Mouse

Background

Enables signaling receptor activity. Involved in T cell mediated cytotoxicity directed against tumor cell target and detection of tumor cell. Part of alpha-beta T cell receptor complex.

Recommended Dilutions

WB 1:500 - 1:1000

ELISA Recommended starting concentration is 1 µg/mL. Please optimize the concentration based on your specific assay requirements.

Immunogen Information

Gene ID

6955

Swiss Prot

P01848

Immunogen

Recombinant protein (or fragment). This information is considered to be commercially sensitive.

Synonyms

IMD7; TCRA; TRA@; TRAC

Contact

☎ | 400-999-6126

✉ | cn.market@abclonal.com.cn

🌐 | www.abclonal.com.cn

Product Information

Source

Rabbit

Isotype

IgG

Purification

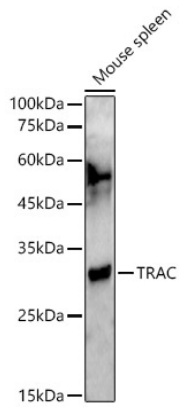
Affinity purification

Storage

Store at -20°C. Avoid freeze / thaw cycles.

Buffer: PBS containing 50% glycerol, preserved with proclin300 or sodium azide (as specified on the Certificate of Analysis), pH 7.3.

Validation Data



Western blot analysis of lysates from Mouse spleen, using TRAC Rabbit pAb (A22122) at 1:700 dilution.
Secondary antibody: HRP-conjugated Goat anti-Rabbit IgG (H+L) (AS014) at 1:10000 dilution.
Lysates/proteins: 25µg per lane.
Blocking buffer: 3% nonfat dry milk in TBST.
Detection: ECL Basic Kit (RM00020).
Exposure time: 180s.