

DNA Ligase III/LIG3 Rabbit mAb

Catalog No.: A22136 **Recombinant** **1 Publications**

Basic Information

Observed MW

96kDa(DNA Ligase III β); 103kDa(DNA Ligase III α)

Calculated MW

113kDa

Category

Primary antibody

Applications

ELISA,WB,IHC-P

Cross-Reactivity

Human,Mouse,Rat

CloneNo number

ARC55533

Background

This gene is a member of the DNA ligase family. Each member of this family encodes a protein that catalyzes the joining of DNA ends but they each have a distinct role in DNA metabolism. The protein encoded by this gene is involved in excision repair and is located in both the mitochondria and nucleus, with translation initiation from the upstream start codon allowing for transport to the mitochondria and translation initiation from a downstream start codon allowing for transport to the nucleus. Additionally, alternate transcriptional splice variants, encoding different isoforms, have been characterized.

Recommended Dilutions

WB	1:1000 - 1:5000
IHC-P	1:50 - 1:200

Immunogen Information

Gene ID

3980

Swiss Prot

P49916

Immunogen

A synthetic peptide corresponding to a sequence within amino acids 400-500 of human DNA Ligase III/LIG3 (NP_039269.2).

Synonyms

LIG2; MTDP520; LIG3alpha; DNA Ligase III/LIG3

Contact

☎ | 400-999-6126

✉ | cn.market@abclonal.com.cn

🌐 | www.abclonal.com.cn

Product Information

Source

Rabbit

Isotype

IgG

Purification

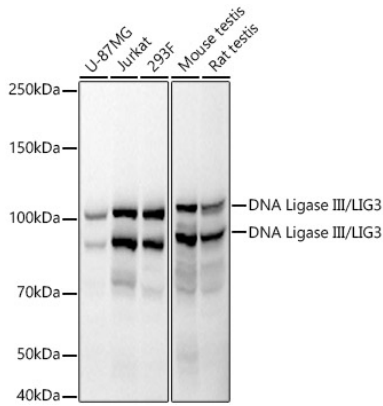
Affinity purification

Storage

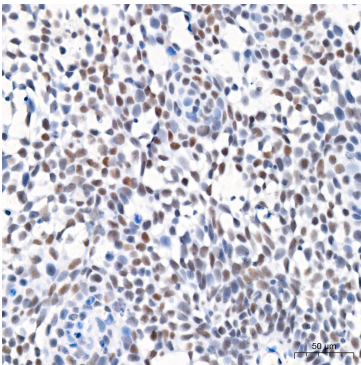
Store at -20°C. Avoid freeze / thaw cycles.

Buffer: PBS with 0.05% proclin300,0.05% BSA,50% glycerol,pH7.3.

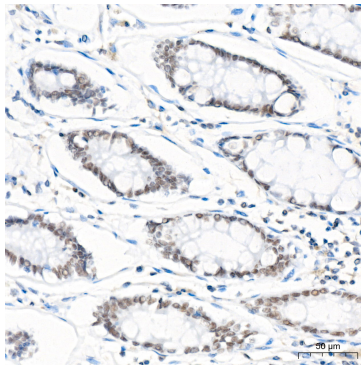
Validation Data



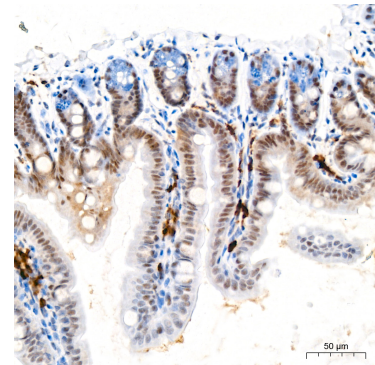
Western blot analysis of various lysates, using DNA Ligase III/LIG3 antibody (A22136) at 1:2000 dilution. Secondary antibody: HRP Goat Anti-Rabbit IgG (H+L) (AS014) at 1:10000 dilution. Lysates/proteins: 25µg per lane. Blocking buffer: 3% nonfat dry milk in TBST. Detection: ECL Basic Kit (RM00020). Exposure time: 20s.



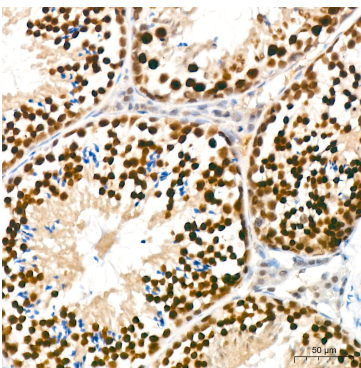
Immunohistochemistry analysis of DNA Ligase III/LIG3 in paraffin-embedded human cervix cancer tissue using DNA Ligase III/LIG3 Rabbit mAb (A22136) at a dilution of 1:200 (40x lens). High pressure antigen retrieval was performed with 0.01 M citrate buffer (pH 6.0) prior to IHC staining.



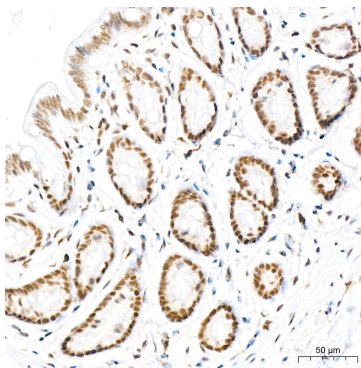
Immunohistochemistry analysis of DNA Ligase III/LIG3 in paraffin-embedded human colon tissue using DNA Ligase III/LIG3 Rabbit mAb (A22136) at a dilution of 1:200 (40x lens). High pressure antigen retrieval was performed with 0.01 M citrate buffer (pH 6.0) prior to IHC staining.



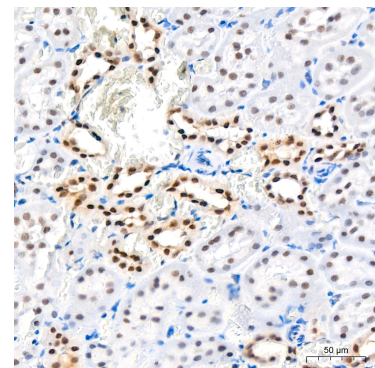
Immunohistochemistry analysis of DNA Ligase III/LIG3 in paraffin-embedded mouse colon tissue using DNA Ligase III/LIG3 Rabbit mAb (A22136) at a dilution of 1:200 (40x lens). High pressure antigen retrieval was performed with 0.01 M citrate buffer (pH 6.0) prior to IHC staining.



Immunohistochemistry analysis of DNA Ligase III/LIG3 in paraffin-embedded mouse testis tissue using DNA Ligase III/LIG3 Rabbit mAb (A22136) at a dilution of 1:200 (40x lens). High pressure antigen retrieval was performed with 0.01 M citrate buffer (pH 6.0) prior to IHC staining.

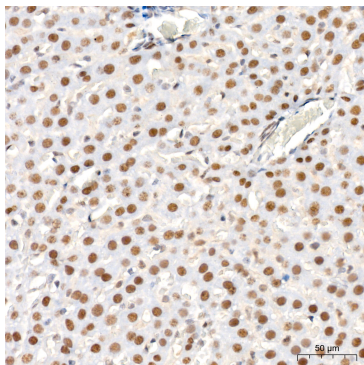


Immunohistochemistry analysis of DNA Ligase III/LIG3 in paraffin-embedded rat colon tissue using DNA Ligase III/LIG3 Rabbit mAb (A22136) at a dilution of 1:200 (40x lens). High pressure antigen retrieval was performed with 0.01 M citrate buffer (pH 6.0) prior to IHC staining.



Immunohistochemistry analysis of DNA Ligase III/LIG3 in paraffin-embedded rat kidney tissue using DNA Ligase III/LIG3 Rabbit mAb (A22136) at a dilution of 1:200 (40x lens). High pressure antigen retrieval was performed with 0.01 M citrate buffer (pH 6.0) prior to IHC staining.

Validation Data



Immunohistochemistry analysis of DNA Ligase III/LIG3 in paraffin-embedded rat liver tissue using DNA Ligase III/LIG3 Rabbit mAb (A22136) at a dilution of 1:200 (40x lens). High pressure antigen retrieval was performed with 0.01 M citrate buffer (pH 6.0) prior to IHC staining.