

# MYH7/ $\beta$ -MHC Rabbit mAb

Catalog No.: A22140 **Recombinant**

## Basic Information

### Observed MW

220-230kDa

### Calculated MW

223kDa

### Category

Primary antibody

### Applications

ELISA, WB

### Cross-Reactivity

Human, Mouse, Rat

### CloneNo number

ARC55749

## Background

Muscle myosin is a hexameric protein containing 2 heavy chain subunits, 2 alkali light chain subunits, and 2 regulatory light chain subunits. This gene encodes the beta (or slow) heavy chain subunit of cardiac myosin. It is expressed predominantly in normal human ventricle. It is also expressed in skeletal muscle tissues rich in slow-twitch type I muscle fibers. Changes in the relative abundance of this protein and the alpha (or fast) heavy subunit of cardiac myosin correlate with the contractile velocity of cardiac muscle. Its expression is also altered during thyroid hormone depletion and hemodynamic overloading. Mutations in this gene are associated with familial hypertrophic cardiomyopathy, myosin storage myopathy, dilated cardiomyopathy, and Laing distal myopathy.

## Recommended Dilutions

WB 1:1000 - 1:5000

## Immunogen Information

### Gene ID

4625

### Swiss Prot

P12883

### Immunogen

A synthetic peptide corresponding to a sequence within amino acids 1700-1800 of human MYH7/ $\beta$ -MHC (NP\_000248.2).

### Synonyms

CMH1; MPD1; SPMD; SPMM; CMD1S; MYHCB; CMYP7A; CMYP7B; MYH7/ $\beta$ -MHC

## Contact

☎ | 400-999-6126

✉ | [cn.market@abclonal.com.cn](mailto:cn.market@abclonal.com.cn)

🌐 | [www.abclonal.com.cn](http://www.abclonal.com.cn)

## Product Information

### Source

Rabbit

### Isotype

IgG

### Purification

Affinity purification

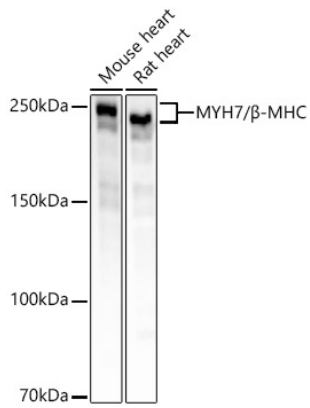
### Storage

Store at -20°C. Avoid freeze / thaw cycles.

Buffer: PBS with 0.05% proclin300, 0.05% BSA, 50% glycerol, pH7.3.

## Validation Data

---



Western blot analysis of various lysates, using MYH7/ $\beta$ -MHC antibody (A22140) at 1:2000 dilution.  
Secondary antibody: HRP Goat Anti-Rabbit IgG (H+L) (AS014) at 1:10000 dilution.  
Lysates/proteins: 25 $\mu$ g per lane.  
Blocking buffer: 3% nonfat dry milk in TBST.  
Detection: ECL Basic Kit (RM00020).  
Exposure time: 4s.