

# ABflo® 488 Rabbit anti-Human/Monkey CD20 mAb

Catalog No.: A22152

## Basic Information

### Observed MW

Refer to figures

### Calculated MW

14kDa/33kDa

### Category

Primary antibody

### Applications

FC

### Cross-Reactivity

Human, Cynomolgus

### CloneNo number

ARC51683

### Conjugate

ABflo® 488. Ex:491nm. Em:516nm.

## Recommended Dilutions

FC 5 µl per 10<sup>6</sup> cells in  
100 µl volume

## Background

This gene encodes a member of the membrane-spanning 4A gene family. Members of this nascent protein family are characterized by common structural features and similar intron/exon splice boundaries and display unique expression patterns among hematopoietic cells and nonlymphoid tissues. This gene encodes a B-lymphocyte surface molecule which plays a role in the development and differentiation of B-cells into plasma cells. This family member is localized to 11q12, among a cluster of family members. Alternative splicing of this gene results in two transcript variants which encode the same protein.

## Immunogen Information

### Gene ID

931

### Swiss Prot

P11836

### Immunogen

Synthetic peptide. This information is considered to be commercially sensitive.

### Synonyms

B1; S7; Bp35; CD20; FMC7; CVID5; LEU-16

## Contact

☎ | 400-999-6126

✉ | [cn.market@abclonal.com.cn](mailto:cn.market@abclonal.com.cn)

🌐 | [www.abclonal.com.cn](http://www.abclonal.com.cn)

## Product Information

### Source

Rabbit

### Isotype

IgG

### Purification

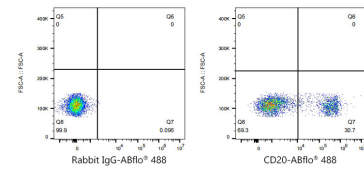
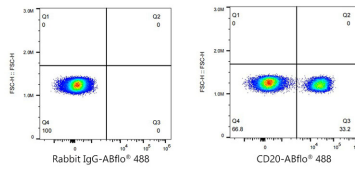
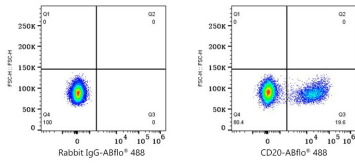
Affinity purification

### Storage

Store at 2-8°C. Avoid freeze.

Buffer: PBS containing 0.2% BSA, preserved with proclin300 or sodium azide (as specified on the Certificate of Analysis), pH 7.3.

## Validation Data



Flow cytometry:  $1 \times 10^6$  Cynomolgus peripheral blood mononuclear cells were surface-stained with ABflo® 488 Rabbit IgG isotype control (A22069,5  $\mu\text{l}/\text{Test}$ , left) or ABflo® 488 Rabbit anti-Human/Monkey CD20 mAb (A22152,5  $\mu\text{l}/\text{Test}$ , right). Cells in the lymphocyte gate were used for analysis.

Flow cytometry:  $1 \times 10^6$  Human PBMC were surface-stained with ABflo® 488 Rabbit IgG isotype control (A22069,5  $\mu\text{l}/\text{Test}$ , left) or ABflo® 488 Rabbit anti-Human/Monkey CD20 mAb (A22152,5  $\mu\text{l}/\text{Test}$ , right). Cells in the lymphocyte gate were used for analysis.

Flow cytometry:  $1 \times 10^6$  Monkey PBMC were surface-stained with ABflo® 488 Rabbit IgG isotype control (A22069,5  $\mu\text{l}/\text{Test}$ , left) or ABflo® 488 Rabbit anti-Human/Monkey CD20 mAb (A22152,5  $\mu\text{l}/\text{Test}$ , right). Cells in the lymphocyte gate were used for analysis.