

# Integrin- $\beta$ 1/CD29 Rabbit pAb

Catalog No.: A2217 **9 Publications**

## Basic Information

### Observed MW

135kDa

### Calculated MW

88kDa

### Category

Primary antibody

### Applications

ELISA,WB,IF/ICC

### Cross-Reactivity

Human, Mouse, Rat

## Background

Integrins are heterodimeric proteins made up of alpha and beta subunits. At least 18 alpha and 8 beta subunits have been described in mammals. Integrin family members are membrane receptors involved in cell adhesion and recognition in a variety of processes including embryogenesis, hemostasis, tissue repair, immune response and metastatic diffusion of tumor cells. This gene encodes a beta subunit. Multiple alternatively spliced transcript variants which encode different protein isoforms have been found for this gene.

## Recommended Dilutions

<b>WB</b>	1:500 - 1:1000
<b>IF/ICC</b>	1:50 - 1:200

## Immunogen Information

### Gene ID

3688

### Swiss Prot

P05556

### Immunogen

Recombinant fusion protein containing a sequence corresponding to amino acids 1-728 of human Integrin- $\beta$ 1/CD29 (NP\_002202.2).

### Synonyms

CD29; FNRB; MDF2; VLAB; GPIIA; MSK12; VLA-BETA; Integrin- $\beta$ 1/CD29

## Contact

☎ | 400-999-6126

✉ | [cn.market@abclonal.com.cn](mailto:cn.market@abclonal.com.cn)

🌐 | [www.abclonal.com.cn](http://www.abclonal.com.cn)

## Product Information

### Source

Rabbit

### Isotype

IgG

### Purification

Affinity purification

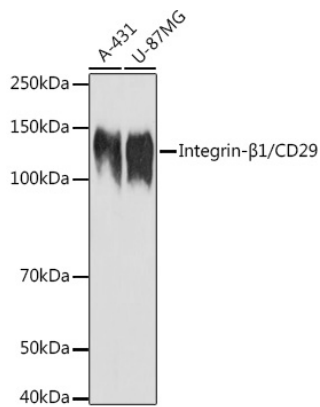
### Storage

Store at -20°C. Avoid freeze / thaw cycles.

Buffer: PBS with 0.05% proclin300,50% glycerol,pH7.3.

## Validation Data

---



Western blot analysis of extracts of various cell lines, using Integrin-β1/CD29 antibody (A2217) at 1:1000 dilution.

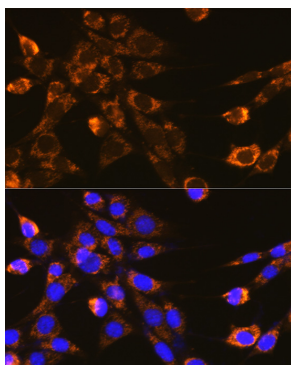
Secondary antibody: HRP Goat Anti-Rabbit IgG (H+L) (AS014) at 1:10000 dilution.

Lysates/proteins: 25μg per lane.

Blocking buffer: 3% nonfat dry milk in TBST.

Detection: ECL Basic Kit (RM00020).

Exposure time: 90s.



Immunofluorescence analysis of NIH-3T3 cells using Integrin-β1/CD29 Rabbit pAb (A2217) at dilution of 1:100 (40x lens). Blue: DAPI for nuclear staining.