

# CD69 Rabbit mAb

Catalog No.: A22171 **Recombinant**

## Basic Information

### Observed MW

25-45kDa

### Calculated MW

23kDa

### Category

Primary antibody

### Applications

ELISA, WB, IF/ICC

### Cross-Reactivity

Mouse, Rat

### CloneNo number

ARC56158

## Background

This gene encodes a member of the calcium dependent lectin superfamily of type II transmembrane receptors. Expression of the encoded protein is induced upon activation of T lymphocytes, and may play a role in proliferation. Furthermore, the protein may act to transmit signals in natural killer cells and platelets.

## Recommended Dilutions

**WB** 1:2000 - 1:4000

**IF/ICC** 1:50 - 1:200

## Immunogen Information

### Gene ID

969

### Swiss Prot

Q07108

### Immunogen

Recombinant fusion protein containing a sequence corresponding to amino acids 62-199 of human CD69 (NP\_001772.1).

### Synonyms

AIM; EA1; MLR-3; CLEC2C; GP32/28; BL-AC/P26; CD69

## Contact

☎ | 400-999-6126

✉ | [cn.market@abclonal.com.cn](mailto:cn.market@abclonal.com.cn)

🌐 | [www.abclonal.com.cn](http://www.abclonal.com.cn)

## Product Information

### Source

Rabbit

### Isotype

IgG

### Purification

Affinity purification

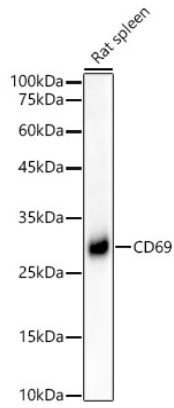
### Storage

Store at -20°C. Avoid freeze / thaw cycles.

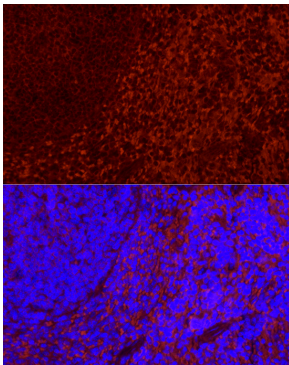
Buffer: PBS with 0.05% proclin300, 0.05% BSA, 50% glycerol, pH7.3.

## Validation Data

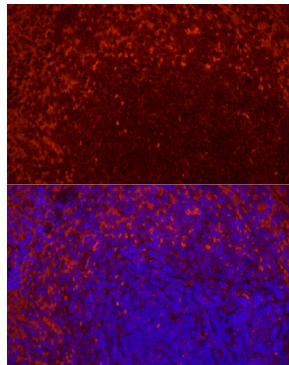
---



Western blot analysis of lysates from Rat spleen, using CD69 Rabbit mAb (A22171) at 1:4000 dilution.  
Secondary antibody: HRP Goat Anti-Rabbit IgG (H+L) (AS014) at 1:10000 dilution.  
Lysates/proteins: 25µg per lane.  
Blocking buffer: 3% nonfat dry milk in TBST.  
Detection: ECL Basic Kit (RM00020).  
Exposure time: 90s.



Immunofluorescence analysis of paraffin-embedded mouse spleen using CD69 Rabbit mAb (A22171) at dilution of 1:200(40x lens).  
Secondary antibody: Cy3 Goat Anti-Rabbit IgG (H+L) (AS007) at 1:500 dilution. Blue: DAPI for nuclear staining.



Immunofluorescence analysis of paraffin-embedded rat spleen using CD69 Rabbit mAb (A22171) at dilution of 1:200(40x lens).  
Secondary antibody: Cy3 Goat Anti-Rabbit IgG (H+L) (AS007) at 1:500 dilution. Blue: DAPI for nuclear staining.