

# [KO Validated] Non-phospho (Active) $\beta$ -Catenin - S33/S37/T41 Rabbit mAb

Catalog No.: A22180

**KO** Validated

Recombinant

3 Publications

## Basic Information

### Observed MW

92kDa

### Calculated MW

85kDa

### Category

Primary antibody

### Applications

WB, IHC-P, ELISA

### Cross-Reactivity

Human, Mouse, Rat

### CloneNo number

ARC53641

## Background

The protein encoded by this gene is part of a complex of proteins that constitute adherens junctions (AJs). AJs are necessary for the creation and maintenance of epithelial cell layers by regulating cell growth and adhesion between cells. The encoded protein also anchors the actin cytoskeleton and may be responsible for transmitting the contact inhibition signal that causes cells to stop dividing once the epithelial sheet is complete. Finally, this protein binds to the product of the APC gene, which is mutated in adenomatous polyposis of the colon. Mutations in this gene are a cause of colorectal cancer (CRC), pilomatixoma (PTR), medulloblastoma (MDB), and ovarian cancer. Alternative splicing results in multiple transcript variants.

## Recommended Dilutions

**WB** 1:2000 - 1:10000**IHC-P** 1:1000 - 1:4000

**ELISA** Recommended starting concentration is 1  $\mu$ g/mL. Please optimize the concentration based on your specific assay requirements.

## Immunogen Information

### Gene ID

1499

### Swiss Prot

P35222

### Immunogen

Synthetic peptide. This information is considered to be commercially sensitive.

### Synonyms

EVR7; CTNNB; MRD19; NEDSDV; armadillo; Non-phospho (Active) $\beta$ -Catenin -S33/S37/T41

## Contact

 | 400-999-6126 | [cn.market@abclonal.com.cn](mailto:cn.market@abclonal.com.cn) | [www.abclonal.com.cn](http://www.abclonal.com.cn)

## Product Information

### Source

Rabbit

### Isotype

IgG

### Purification

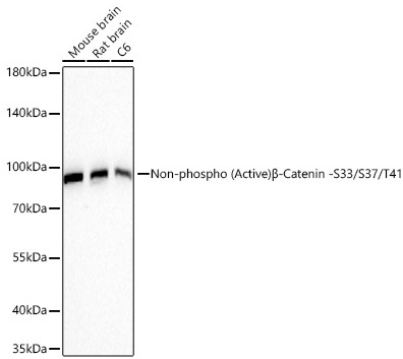
Affinity purification

### Storage

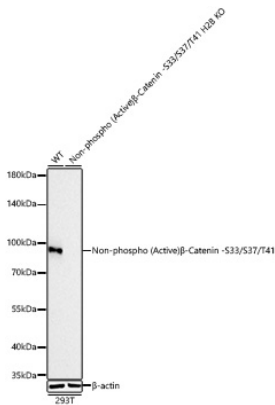
Store at -20°C. Avoid freeze / thaw cycles.

Buffer: PBS with 0.09% Sodium azide, 0.05% BSA, 50% glycerol, pH7.3.

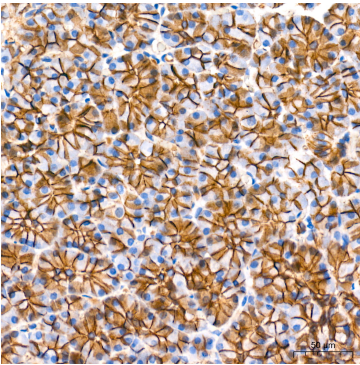
Validation Data



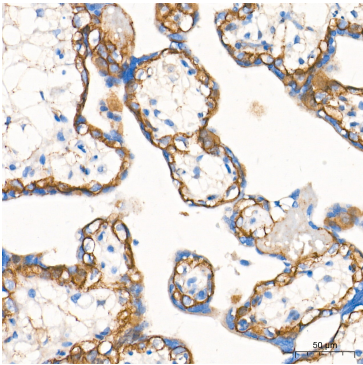
Western blot analysis of various lysates using [KO Validated] Non-phospho (Active)β-Catenin -S33/S37/T41 Rabbit mAb (A22180) at 1:11000 dilution incubated overnight at 4°C.  
Secondary antibody: HRP-conjugated Goat anti-Rabbit IgG (H+L) (AS014) at 1:10000 dilution.  
Lysates/proteins: 25 µg per lane.  
Blocking buffer: 3% nonfat dry milk in TBST.  
Detection: ECL Basic Kit (RM00020).  
Exposure time: 20s.



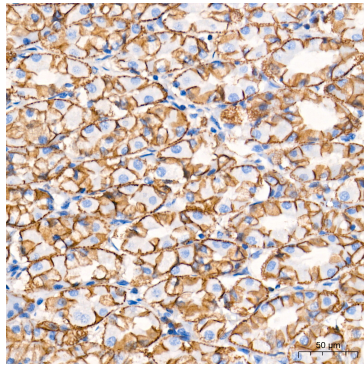
Western blot analysis of lysates from wild type (WT) and Non-phospho (Active)β-Catenin -S33/S37/T41 knockout (KO) 293T cells using [KO Validated] Non-phospho (Active)β-Catenin -S33/S37/T41 Rabbit mAb (A22180) at 1:16000 dilution incubated overnight at 4°C.  
Secondary antibody: HRP-conjugated Goat anti-Rabbit IgG (H+L) (AS014) at 1:10000 dilution.  
Lysates/proteins: 25 µg per lane.  
Blocking buffer: 3% nonfat dry milk in TBST.  
Detection: ECL Basic Kit (RM00020).  
Exposure time: 90s.



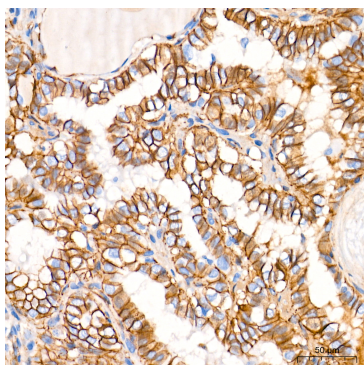
Immunohistochemistry analysis of paraffin-embedded Human pancreas tissue using [KO Validated] Non-phospho (Active)β-Catenin -S33/S37/T41 Rabbit mAb (A22180) at a dilution of 1:1500 (40x lens). High pressure antigen retrieval performed with 0.01M Tris-EDTA Buffer (pH 9.0) prior to IHC staining.



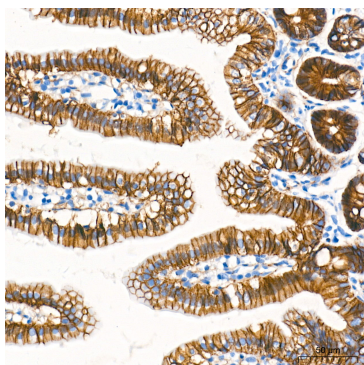
Immunohistochemistry analysis of paraffin-embedded Human placenta tissue using [KO Validated] Non-phospho (Active)β-Catenin -S33/S37/T41 Rabbit mAb (A22180) at a dilution of 1:1500 (40x lens). High pressure antigen retrieval performed with 0.01M Tris-EDTA Buffer (pH 9.0) prior to IHC staining.



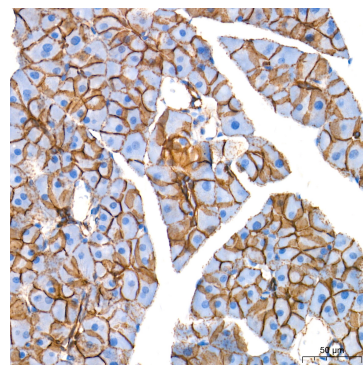
Immunohistochemistry analysis of paraffin-embedded Human stomach tissue using [KO Validated] Non-phospho (Active)β-Catenin -S33/S37/T41 Rabbit mAb (A22180) at a dilution of 1:1500 (40x lens). High pressure antigen retrieval performed with 0.01M Tris-EDTA Buffer (pH 9.0) prior to IHC staining.



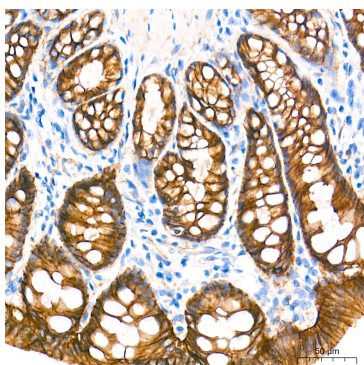
Immunohistochemistry analysis of paraffin-embedded Human thyroid cancer tissue using [KO Validated] Non-phospho (Active)β-Catenin -S33/S37/T41 Rabbit mAb (A22180) at a dilution of 1:1500 (40x lens). High pressure antigen retrieval performed with 0.01M Tris-EDTA Buffer (pH 9.0) prior to IHC staining.



Immunohistochemistry analysis of paraffin-embedded Mouse intestine tissue using [KO Validated] Non-phospho (Active)β-Catenin - S33/S37/T41 Rabbit mAb (A22180) at a dilution of 1:1500 (40x lens). High pressure antigen retrieval performed with 0.01M Tris-EDTA Buffer (pH 9.0) prior to IHC staining.



Immunohistochemistry analysis of paraffin-embedded Mouse pancreas tissue using [KO Validated] Non-phospho (Active)β-Catenin - S33/S37/T41 Rabbit mAb (A22180) at a dilution of 1:1500 (40x lens). High pressure antigen retrieval performed with 0.01M Tris-EDTA Buffer (pH 9.0) prior to IHC staining.



Immunohistochemistry analysis of paraffin-embedded Rat colon tissue using [KO Validated] Non-phospho (Active)β-Catenin - S33/S37/T41 Rabbit mAb (A22180) at a dilution of 1:1500 (40x lens). High pressure antigen retrieval performed with 0.01M Tris-EDTA Buffer (pH 9.0) prior to IHC staining.