

ABflo® 647 Rabbit anti-Human CEACAM6 mAb

Catalog No.: A22188

Basic Information

Observed MW

Calculated MW

37kDa

Category

Primary antibody

Applications

FC

Cross-Reactivity

Human

CloneNo number

ARC54333-ABf647

Conjugate

ABflo® 647. Ex:648nm. Em:664nm.

Recommended Dilutions

FC 5 µl per 10⁶ cells in
100 µl volume

Background

This gene encodes a protein that belongs to the carcinoembryonic antigen (CEA) family whose members are glycosyl phosphatidyl inositol (GPI) anchored cell surface glycoproteins. Members of this family play a role in cell adhesion and are widely used as tumor markers in serum immunoassay determinations of carcinoma. This gene affects the sensitivity of tumor cells to adenovirus infection. The protein encoded by this gene acts as a receptor for adherent-invasive E. coli adhesion to the surface of ileal epithelial cells in patients with Crohn's disease. This gene is clustered with genes and pseudogenes of the cell adhesion molecules subgroup of the CEA family on chromosome 19.

Immunogen Information

Gene ID

4680

Swiss Prot

P40199

Immunogen

Recombinant fusion protein containing a sequence corresponding to amino acids 35-320 of human CEACAM6 (NP_002474.4).

Synonyms

NCA; CEAL; CD66c

Contact

☎ | 400-999-6126

✉ | cn.market@abclonal.com.cn

🌐 | www.abclonal.com.cn

Product Information

Source

Rabbit

Isotype

IgG

Purification

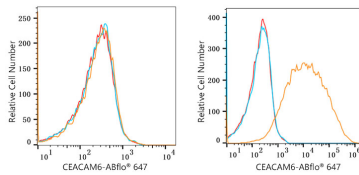
Affinity purification

Storage

Store at 2-8°C. Avoid freeze.

Buffer: PBS with 0.03% proclin300,0.2% BSA,pH7.3.

Validation Data



Flow cytometry: 1×10^6 LNCaP cells (negative control, left) and BxPC-3 cells (right) were surface-stained with ABflo® 647 Rabbit anti-Human CEACAM6 mAb (A22188, 5 μ l/Test, orange line) or ABflo® 647 Rabbit IgG isotype control (A22070, 5 μ l/Test, blue line). Non-fluorescently stained cells were used as blank control (red line).