

ABflo® 647 Rabbit anti-Human Siglec-8 mAb

Catalog No.: A22190

Basic Information

Observed MW

Calculated MW

44kDa/46kDa/54kDa

Category

Primary antibody

Applications

FC

Cross-Reactivity

Human

CloneNo number

ARC52422-ABf647

Conjugate

ABflo® 647. Ex:648nm. Em:664nm.

Recommended Dilutions

FC 5 µl per 10⁶ cells in
100 µl volume

Background

Sialic acid-binding immunoglobulin (Ig)-like lectins, or SIGLECs (e.g., CD33 (MIM 159590)), are a family of type 1 transmembrane proteins each having a unique expression pattern, mostly in hemopoietic cells. SIGLEC8 is a member of the CD33-like subgroup of SIGLECs, which are localized to 19q13.3-q13.4 and have 2 conserved cytoplasmic tyrosine-based motifs: an immunoreceptor tyrosine-based inhibitory motif, or ITIM (see MIM 604964), and a motif homologous to one identified in signaling lymphocyte activation molecule (SLAM; MIM 603492) that mediates an association with SLAM-associated protein (SAP; MIM 300490) (summarized by Foussias et al., 2000 [PubMed 11095983]).

Immunogen Information

Gene ID

27181

Swiss Prot

Q9NYZ4

Immunogen

Recombinant fusion protein containing a sequence corresponding to amino acids 17-363 of human Siglec-8(NP_055257.2)

Synonyms

SAF2; SIGLEC-8; SIGLEC8L

Contact

☎ | 400-999-6126

✉ | cn.market@abclonal.com.cn

🌐 | www.abclonal.com.cn

Product Information

Source

Rabbit

Isotype

IgG

Purification

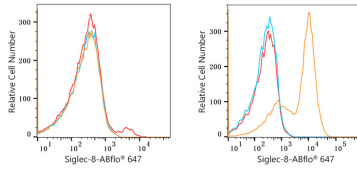
Affinity purification

Storage

Store at 2-8°C. Avoid freeze.

Buffer: PBS with 0.03% proclin300,0.2% BSA,pH7.3.

Validation Data



Flow cytometry: 1×10^6 293F cells (negative control, left) and 293F (Transfection, right) cells were surface-stained with ABflo® 647 Rabbit anti-Human Siglec-8 mAb (A22190, 5 μ l/Test, orange line) or ABflo® 647 Rabbit IgG isotype control (A22070, 5 μ l/Test, blue line). Non-fluorescently stained cells were used as blank control (red line).